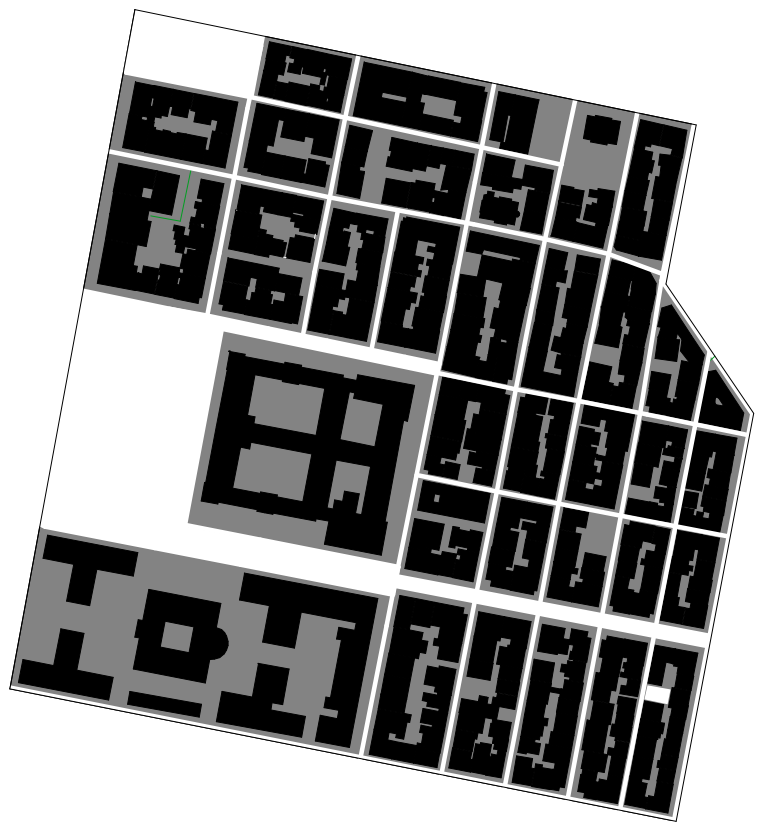


EXERCHEIA

Atenas

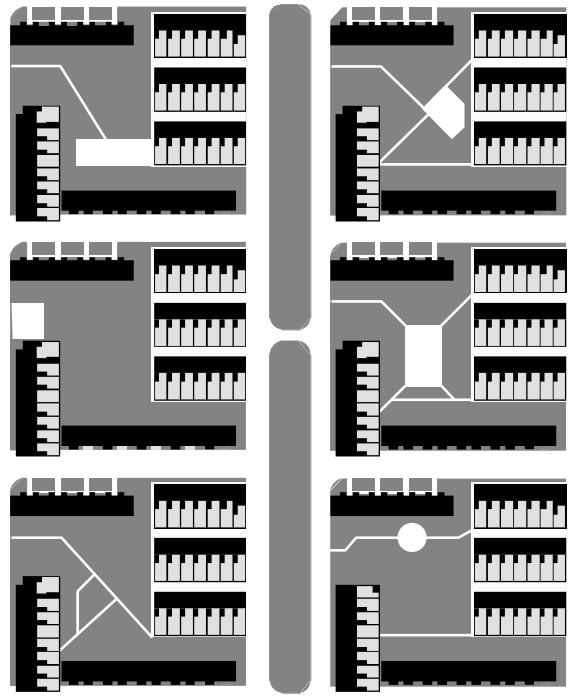


A: 19.48 ha
 FSI: 3.8
 GSI: 0.49
 OSR: 0.13
 L: 8
 N: 0.026 /m
 w: 78 m
 b: 9.6 m
 T: 23 %

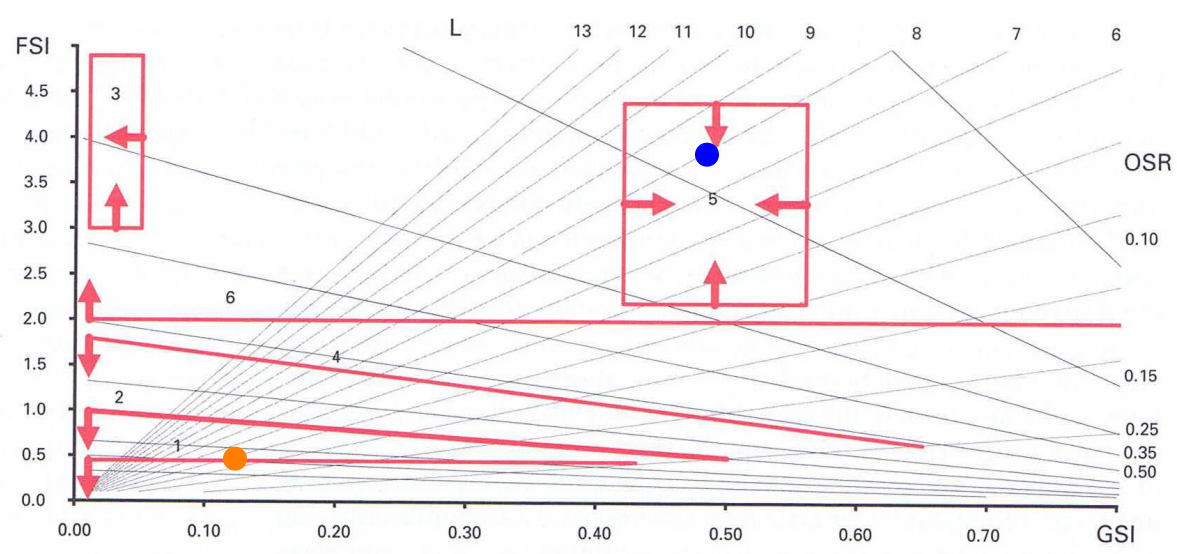


Klein Driene

Paises Bajos



A: 13.93 ha
 FSI: 0.475
 GSI: 0.12
 OSR: 1.85
 L: 3,95
 w: 126.58 m
 b: 79.21 m
 T: 0.86 %



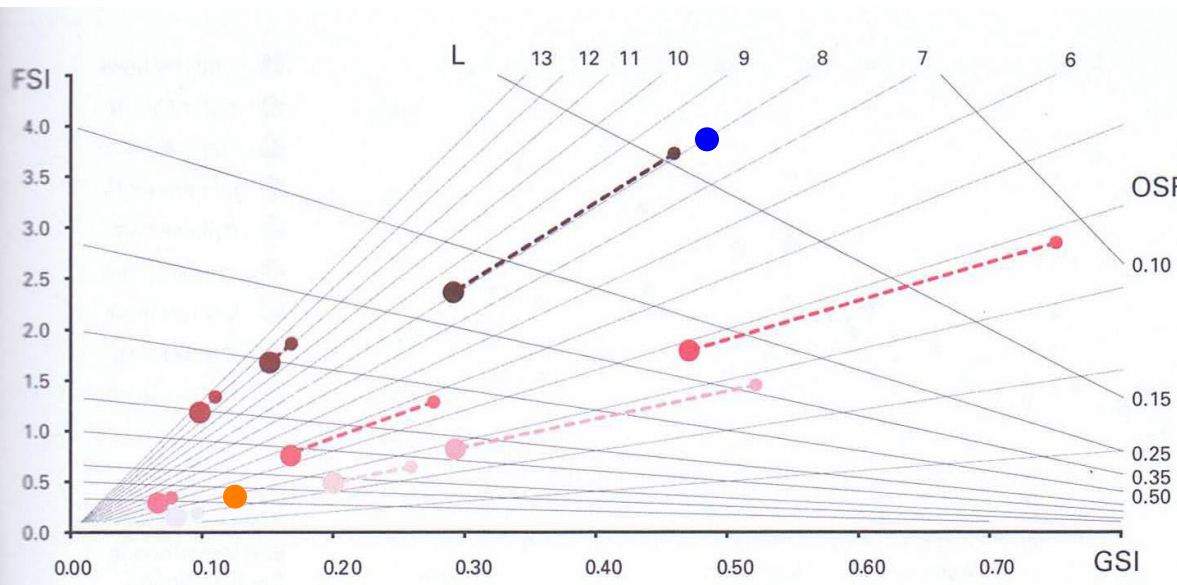
Doctrines which have been argued for through history, polemically translated into density thresholds in the Spacemate.
 1 Unwin (1912)
 2 Hoenig (1920s)
 3 le Corbusier (1920s)
 4 Gropius (1930)
 5 Jacobs (1961)
 6 Lozano (1990)

URBANISMO 1

Urban Games 8: Manuales

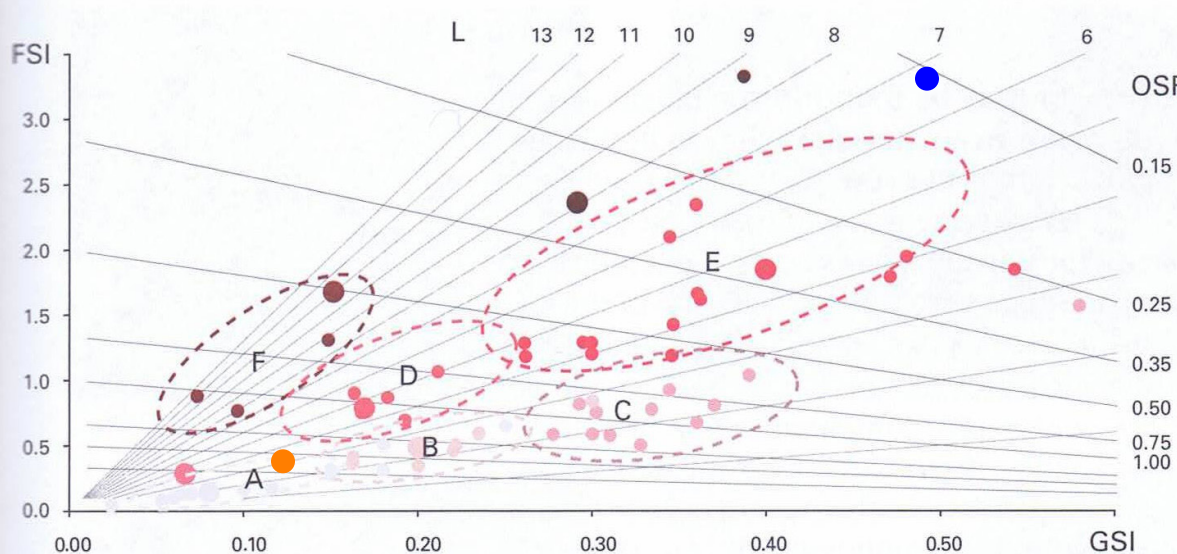
Estudios de los tejidos de Exercheia y Kleine Driene

- Deva-Putra WARDIMAN
- Juan-Antonio CATENA
- Sarah PINZON



● high-rise block
 ● high-rise strip
 ● high-rise point
 ● mid-rise block
 ● mid-rise strip
 ● mid-rise point
 ● low-rise block
 ● low-rise strip
 ● low-rise point

Nine archetypal samples in the Spacemate diagram on the scale of the island and the fabric.



A low-rise point type
 B low-rise strip type
 C low-rise block type
 D mid-rise strip type
 E mid-rise block type
 F hybrid high-rise point/strip type

Building types in the Spacemate diagram on the scale of the fabric.

- Exerchia
- Kleine Driene