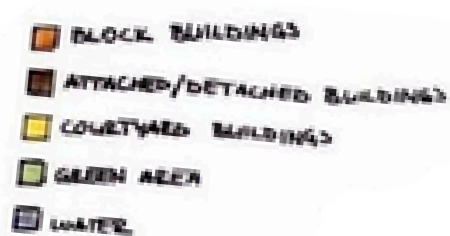


RIGA

Urban Transformation of the Kipsala Waterfront

The project proposes the transformation of an underused and fragmented open area in Kīpsala into an inclusive urban living environment connected to the university, the river and the city. Currently characterized by vacant plots, infrastructure corridors and weak spatial definition, the site functions as a residual urban void rather than an active part of Riga's public life. Despite its proximity to the city center, the Daugava River and Riga Technical University, the area lacks programmatic intensity, pedestrian continuity and social activity.

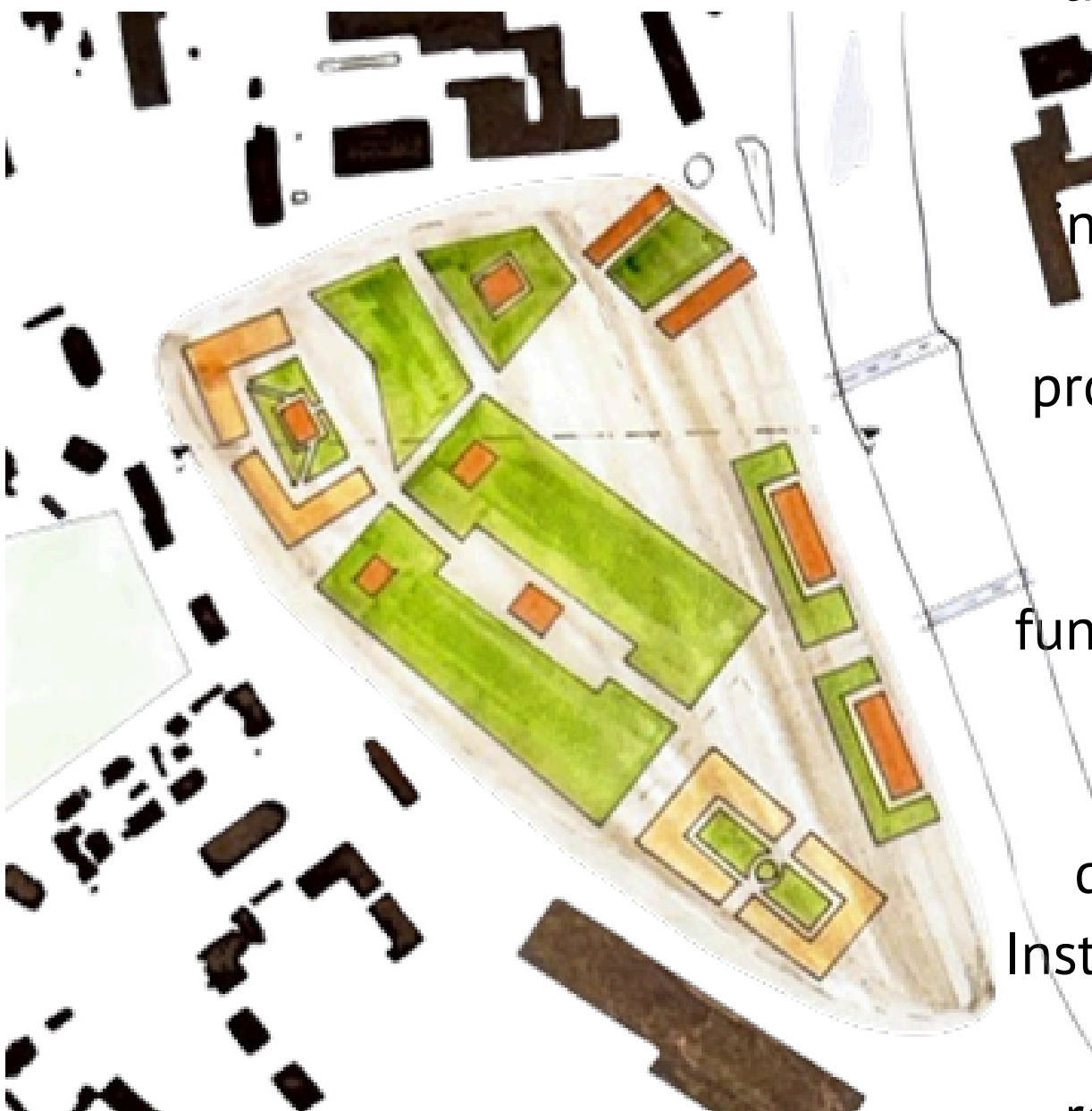


SCALE:1/2500

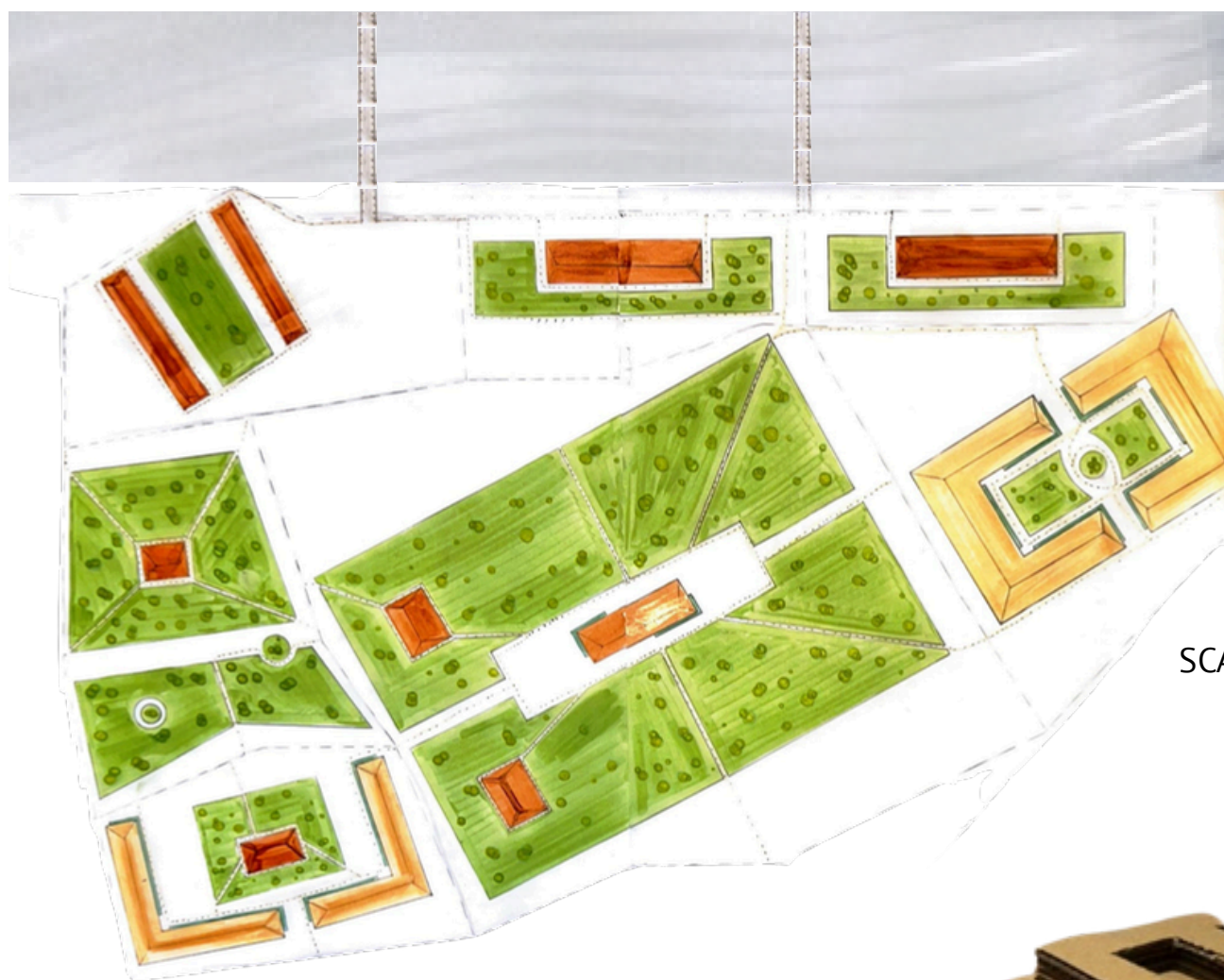


SCALE:1/2000

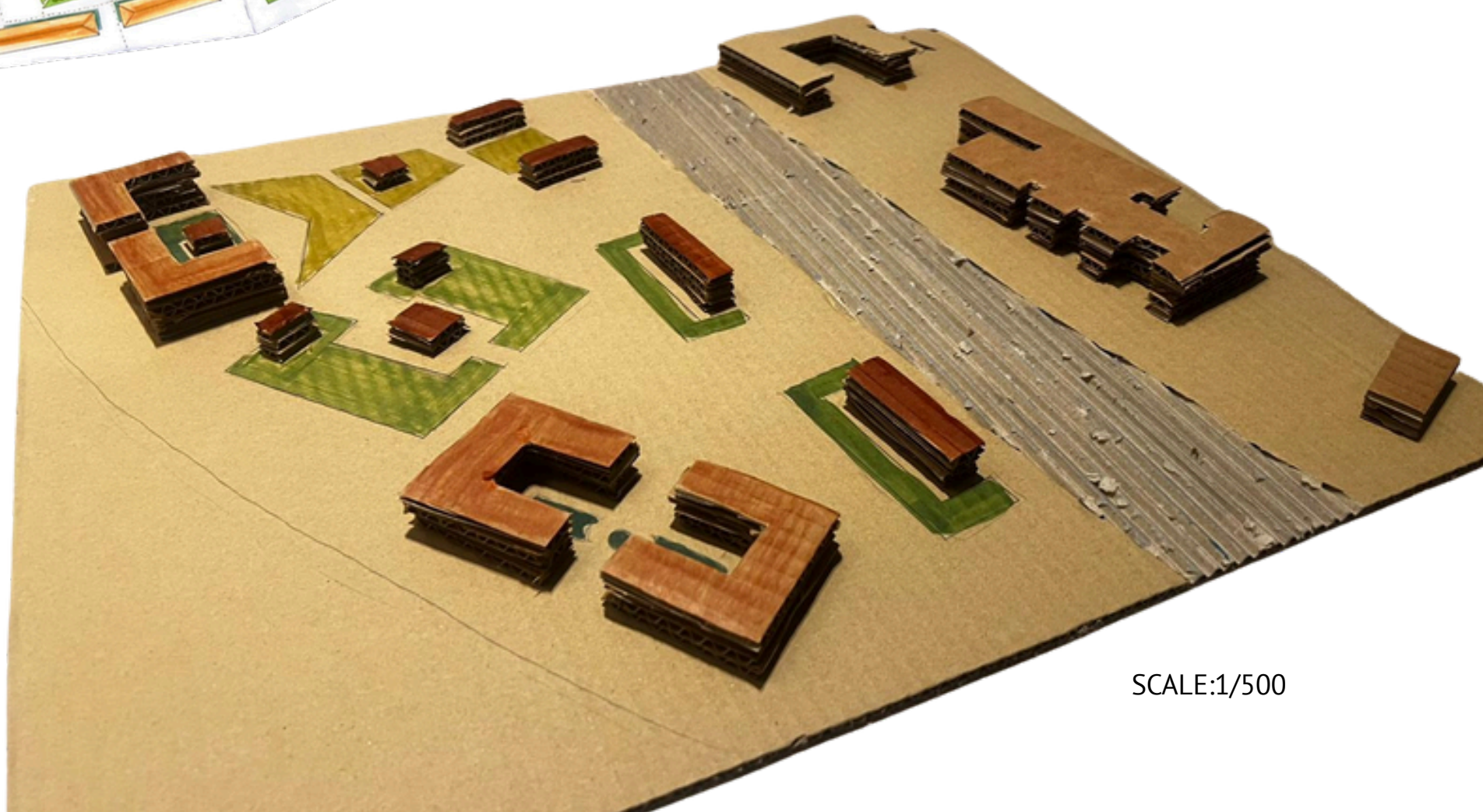
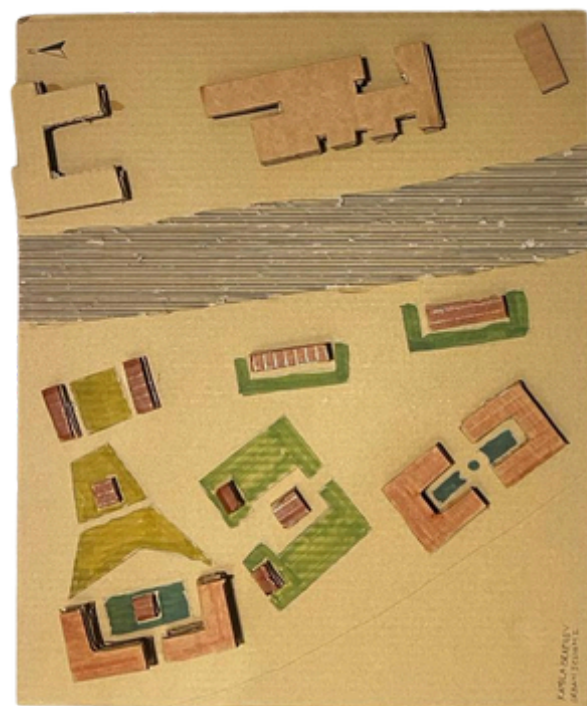
Rather than treating the site as a tabula rasa, the proposal builds upon its existing conditions through selective densification and spatial reorganization. A mixed-use urban structure is introduced, combining housing, shared facilities and public programs. While the presence of the university informs the inclusion of student-oriented functions such as co-living units, study spaces and collective amenities, the project deliberately avoids exclusivity. Instead, it aims to create an open neighborhood accessible to residents, students and visitors alike



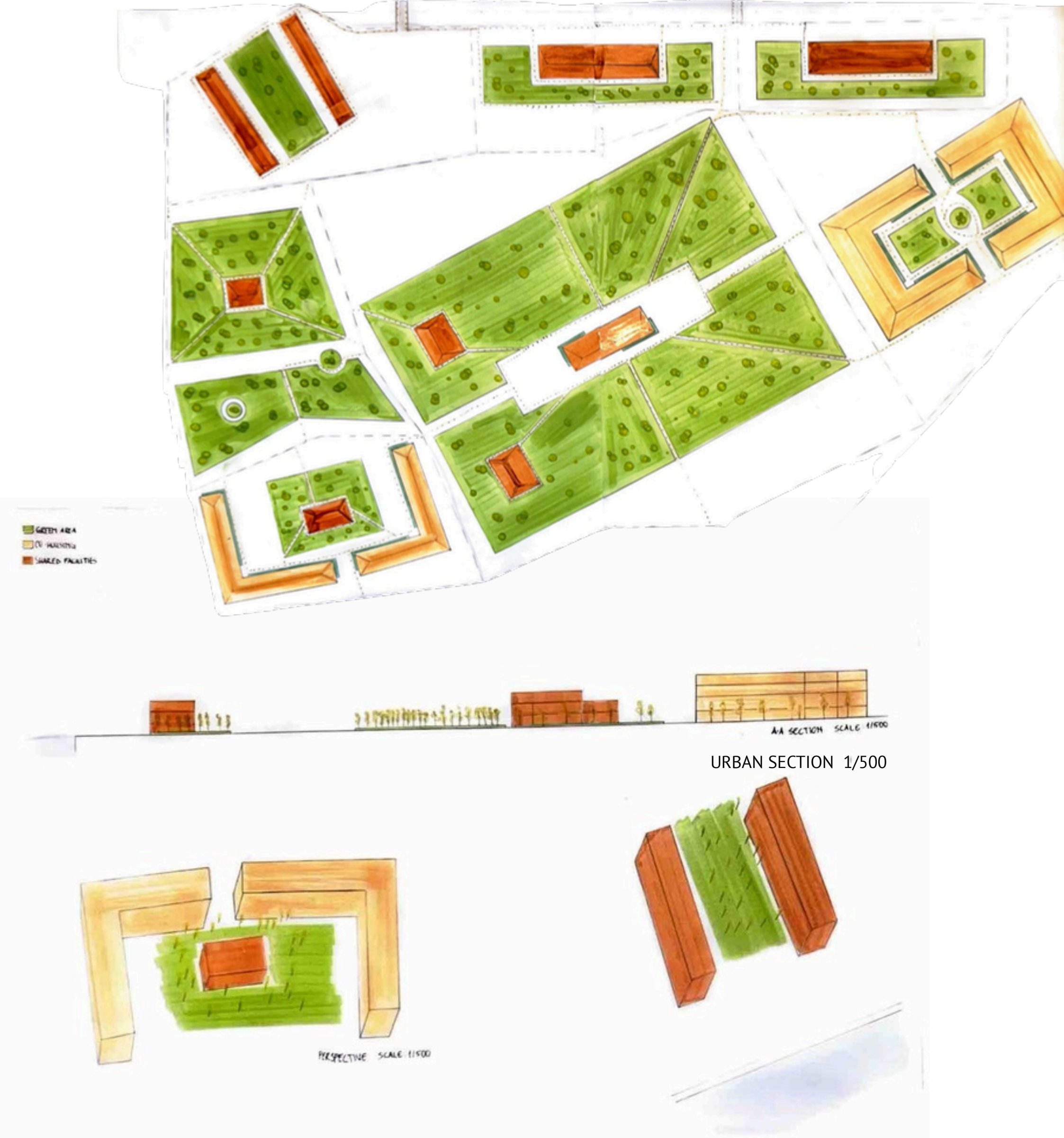
Public ground floors, permeable building typologies and a fine-grained network of pedestrian and cyclist routes ensure continuity across the site and connect it to the surrounding urban fabric. Vacant land is reactivated through a balance between built volumes and open spaces, generating courtyards, plazas and semi-public areas that support everyday social interaction. Variations in building height and typology structure views, define spatial hierarchy and contribute to a diverse yet coherent urban identity.



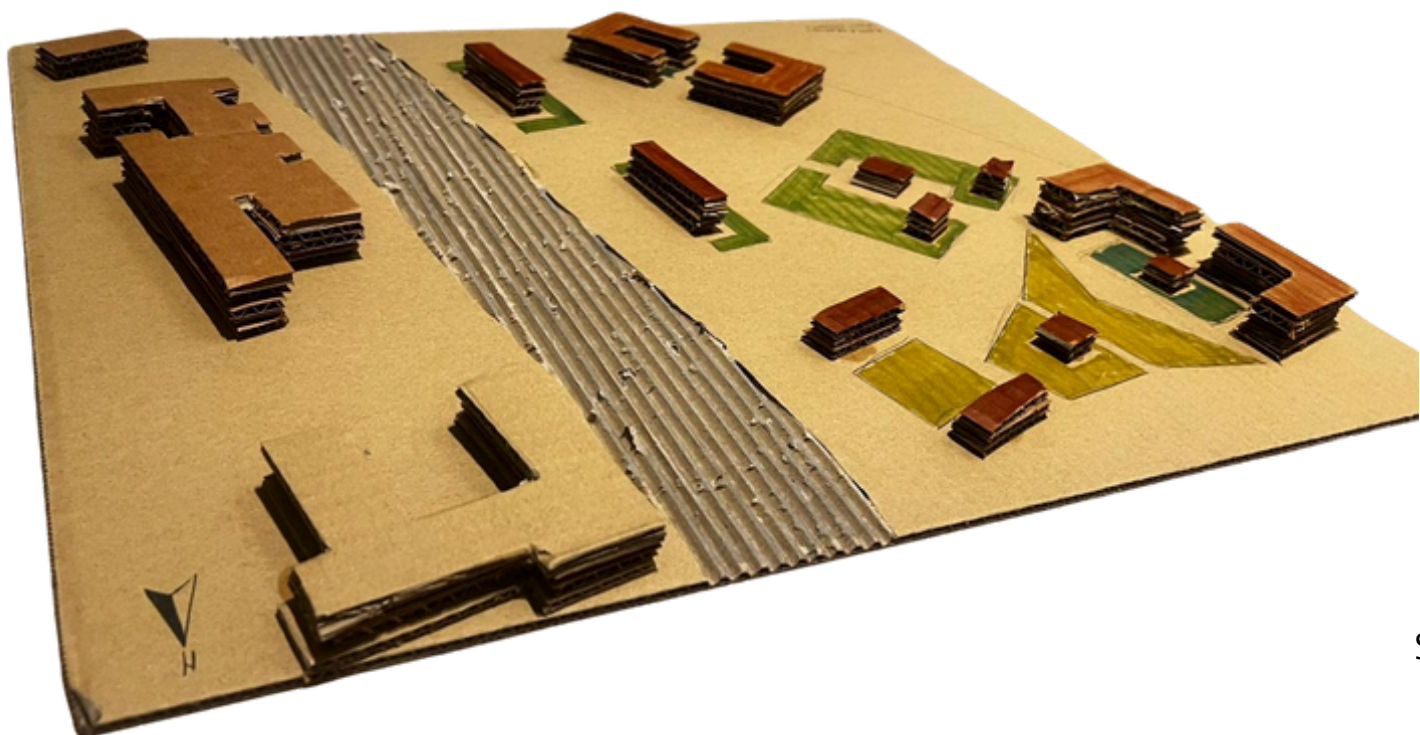
SCALE:1/500



SCALE:1/500



The Daugava River is integrated as part of a broader green-blue system that supports environmental performance and public life. Waterfront paths, green corridors and semi-permeable surfaces reinforce ecological resilience while extending the network of public spaces. Through this approach, the project transforms a former urban boundary into a lived and shared urban threshold, mediating between academic life, residential use and the wider city.



SCALE:1/500