



RIGA

THE CITY AND ITS URBAN PROJECTS

RĪGA

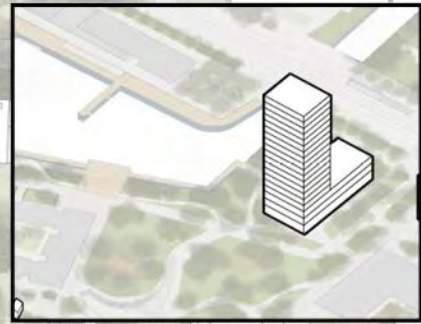
By: Azra Kahraman, Kamila Īsrapiļov, Sofia Meschia

RIGA WATERFRONT

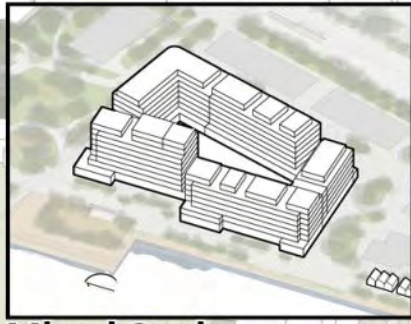
By: Eagle Hills and Hosoya Schaefer Architects



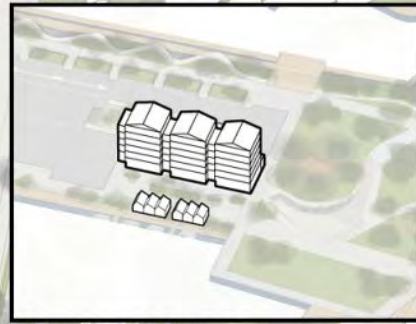
- Reclaims former industrial river edges as public space
- Reorients Riga's urban life toward the Daugava
- Introduces continuous pedestrian-cycling infrastructure at metropolitan scale
- The project raises questions about public access versus privatization through new residential developments along the river.



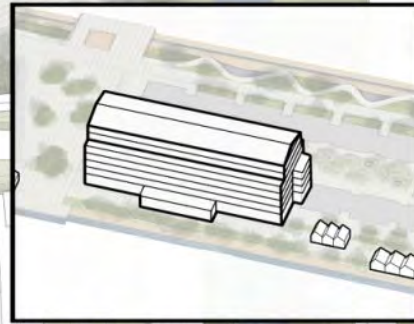
Marina Towers



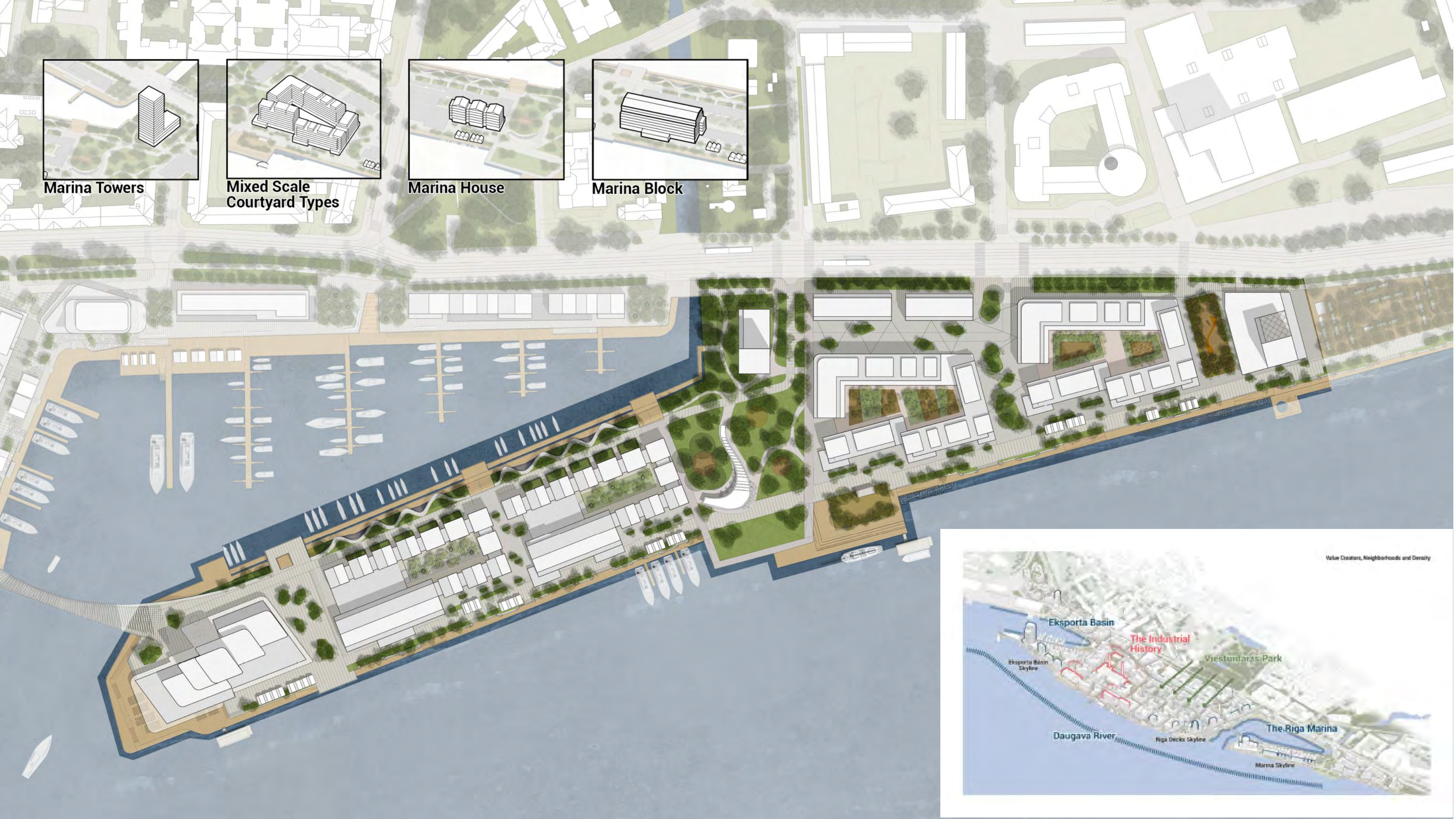
Mixed Scale
Courtyard Types



Marina House



Marina Block



Value Creators, Neighborhoods and Density

SKANSTE 2030



What is it

- Large-scale regeneration of a former peripheral/underdeveloped area

Urban Strategy

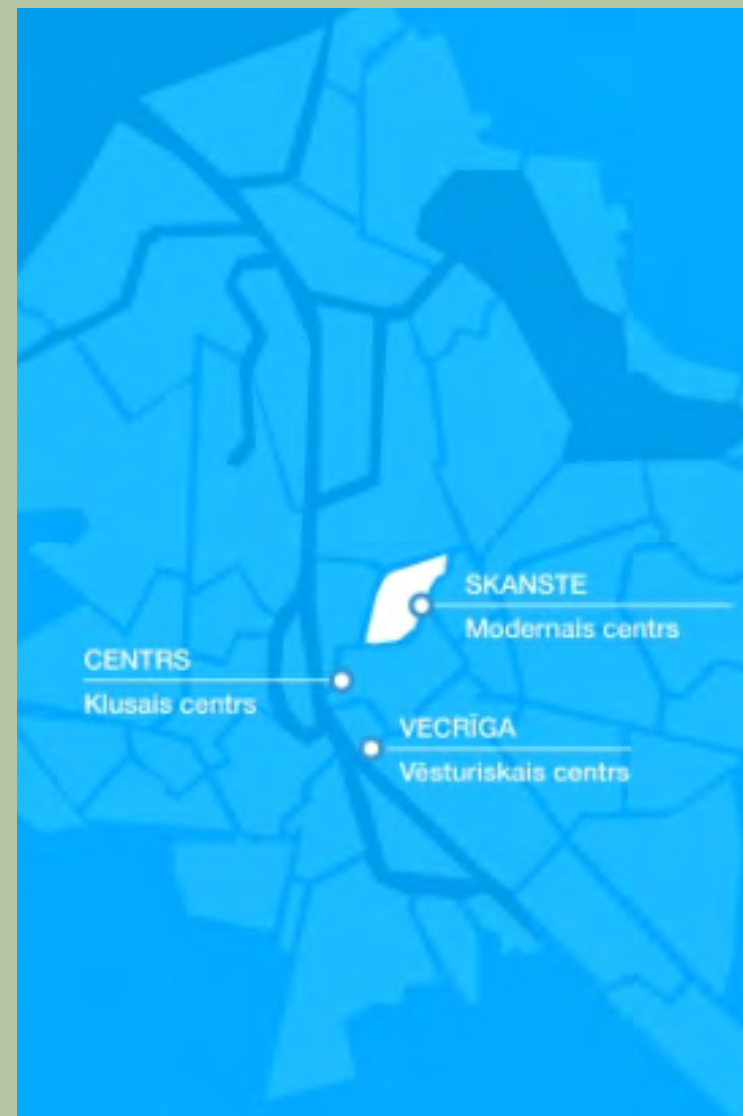
- New green structure and water management
- Transit-oriented development (tram + bike network)
- Mix of housing, offices, and public space

Why it matters

- Shifts Riga's growth away from the historic center
- Creates a new urban node rather than suburban sprawl

Critical Note

- "Its success depends on whether public space is prioritized over speculative office development."



RIGA CENTRAL STATION

By: Weston Williamson + Partners

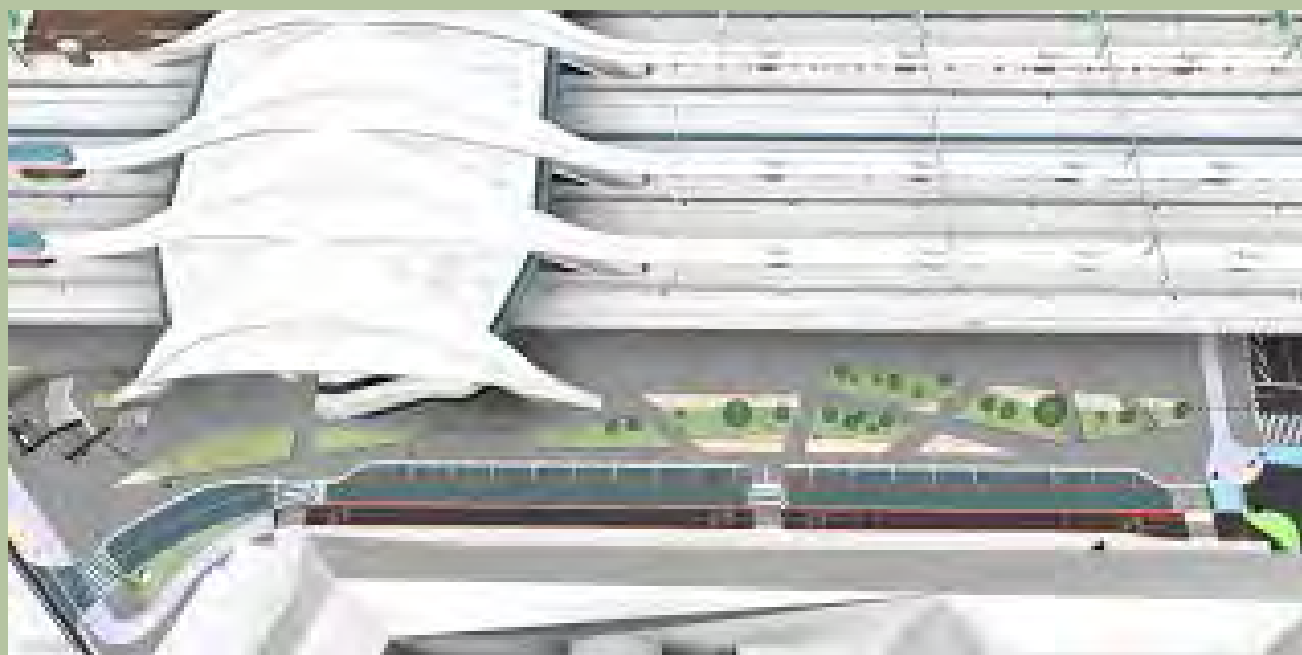


Urban Role

- Baltic-scale mobility hub
- Reconnects Riga to the European rail network

Urban impact

- Creates a new east-west urban axis
- Restructures pedestrian and public space around the station



Challenges

- Construction disrupts daily city life
- Funding and timeline uncertainty
- Risk of infrastructure overpowering urban quality

URBAN STRATEGIES IN RIGA – COMPARISON

- Waterfront → boundary → public space
- Skanste → expansion → green urbanism
- Central Station → infrastructure → connectivity

Together, these projects show how Riga is redefining its relationship to water, mobility, and large-scale urban growth.