

HANS SHAROUN

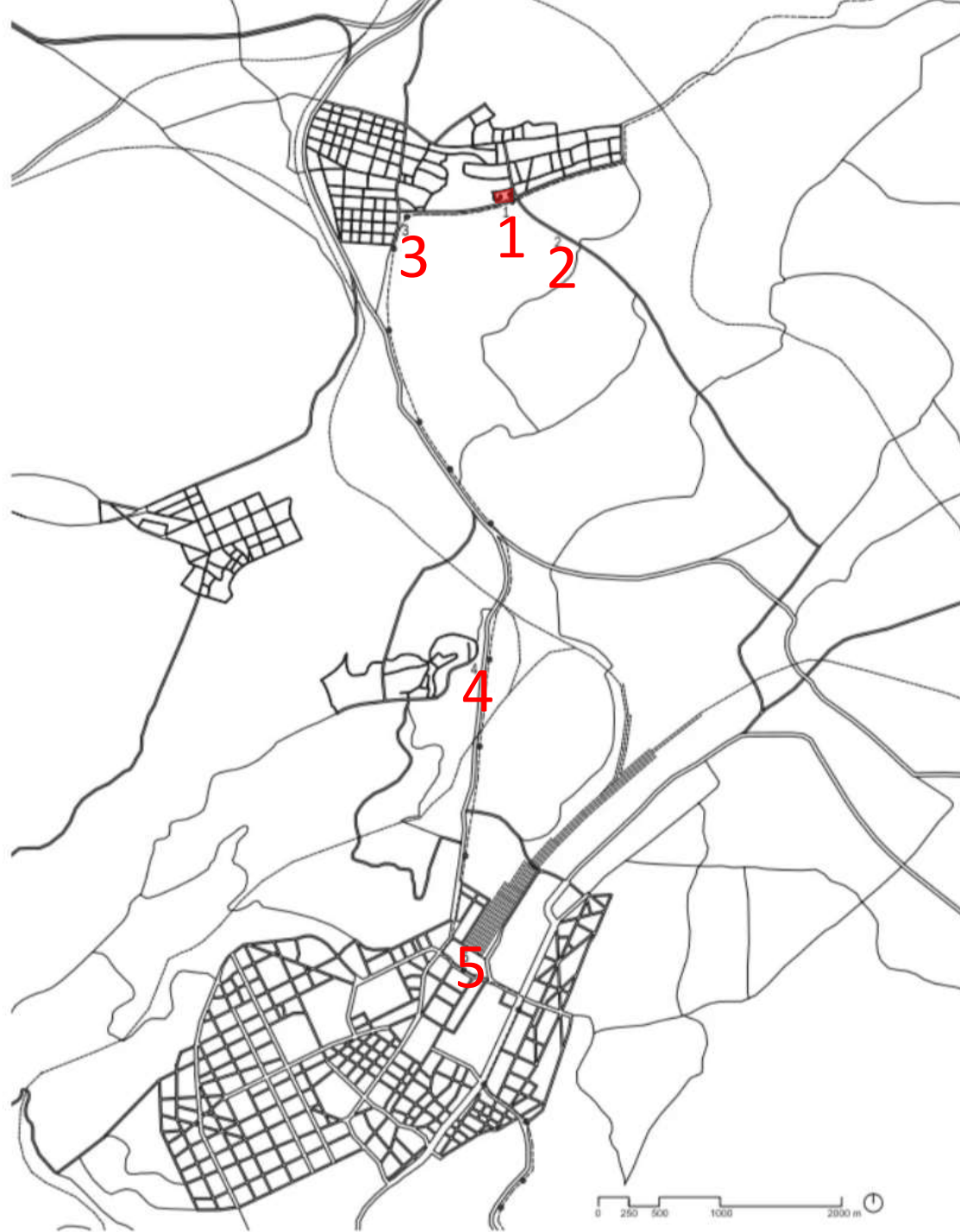








# RELACIÓN CON EL TERRITORIO



1 – Conjunto residencial Romeo y Julieta

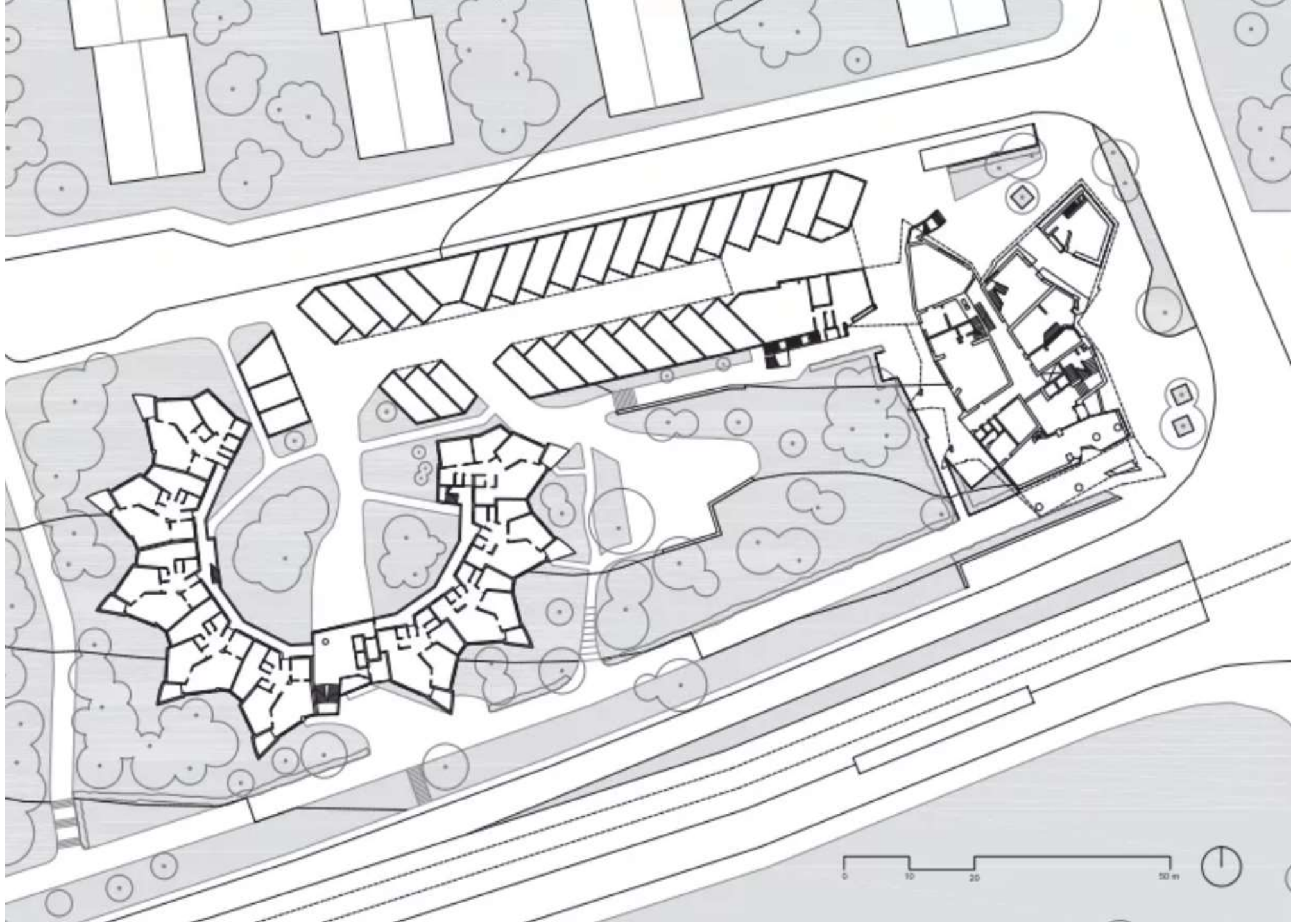
2 – Schozancher

3 – Zuffensausen

4 – Weissenhoff Siedung

5 – Stuttgart

---•--- Tranvia metropolitano









EDIFICIO JULIETA







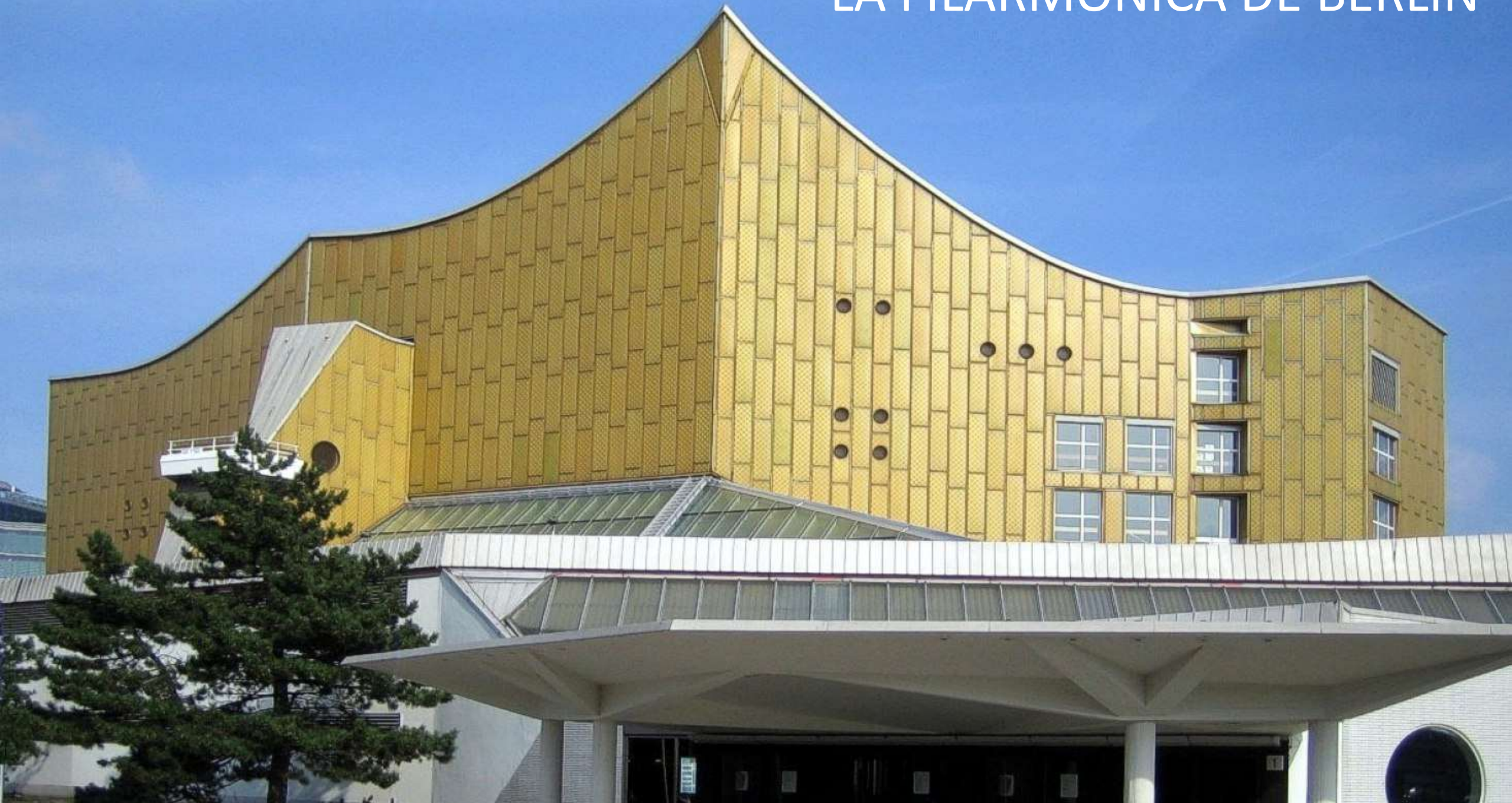
LA TORRE ROMEO



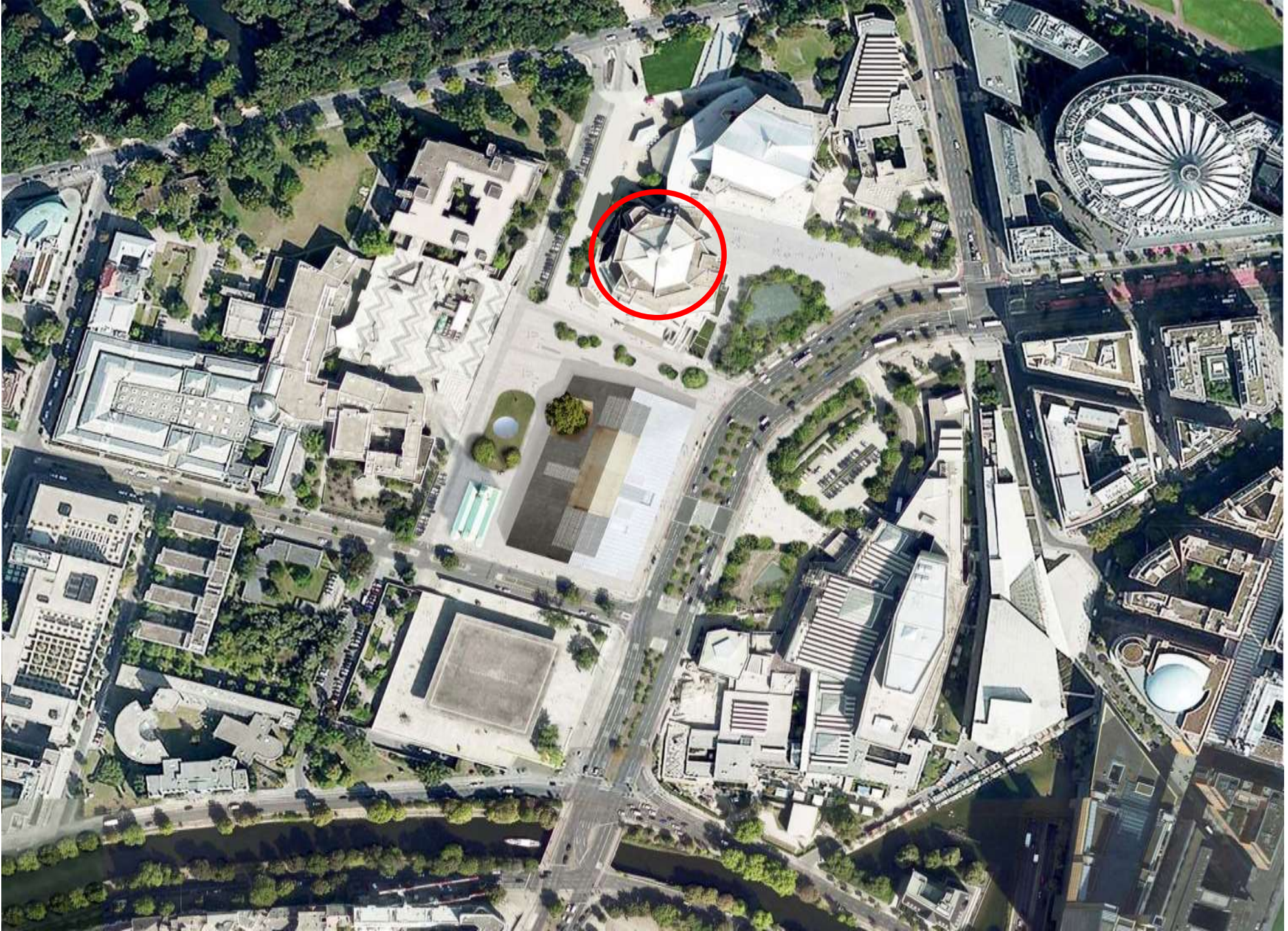




# LA FILARMÓNICA DE BERLÍN



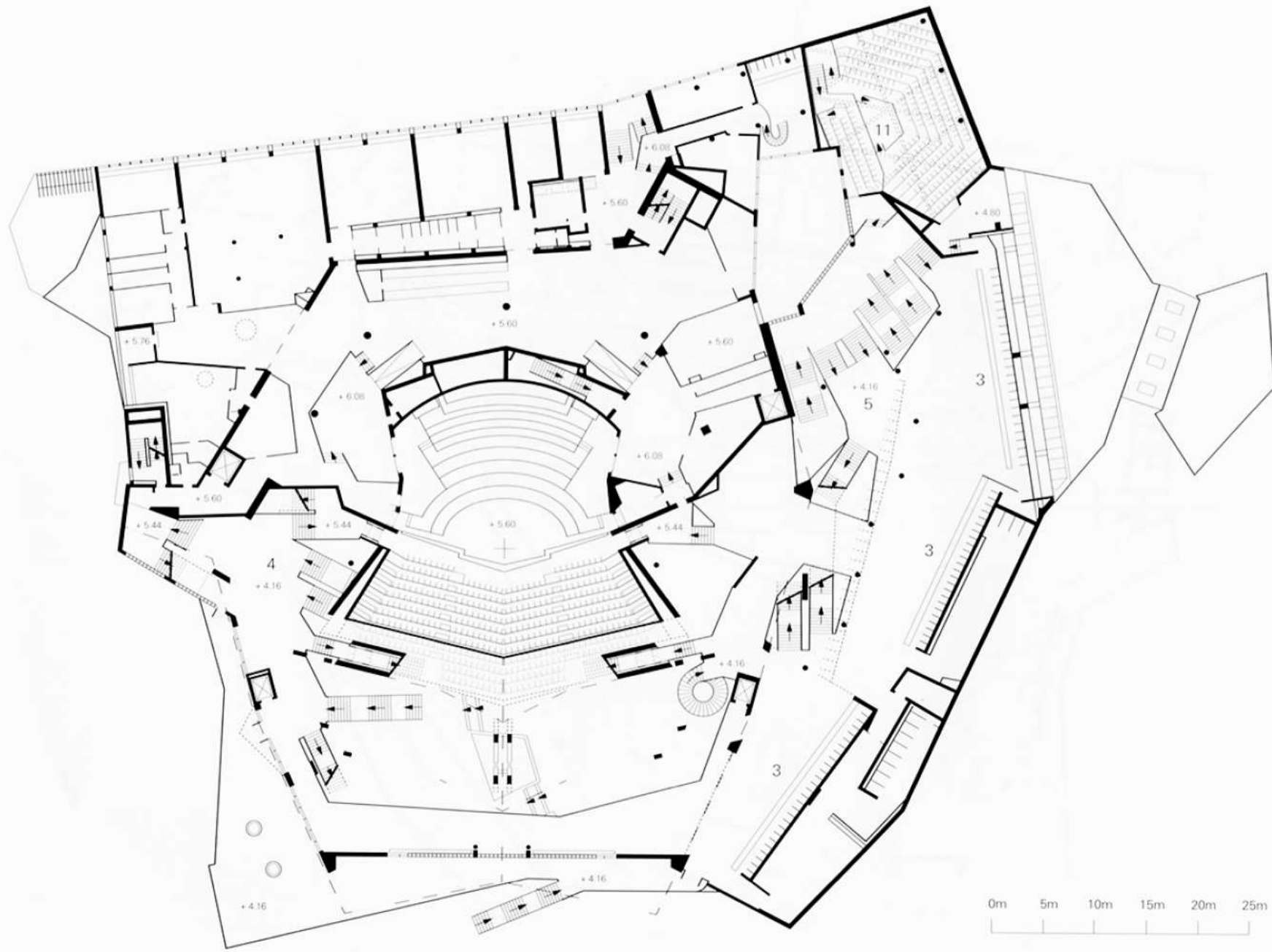




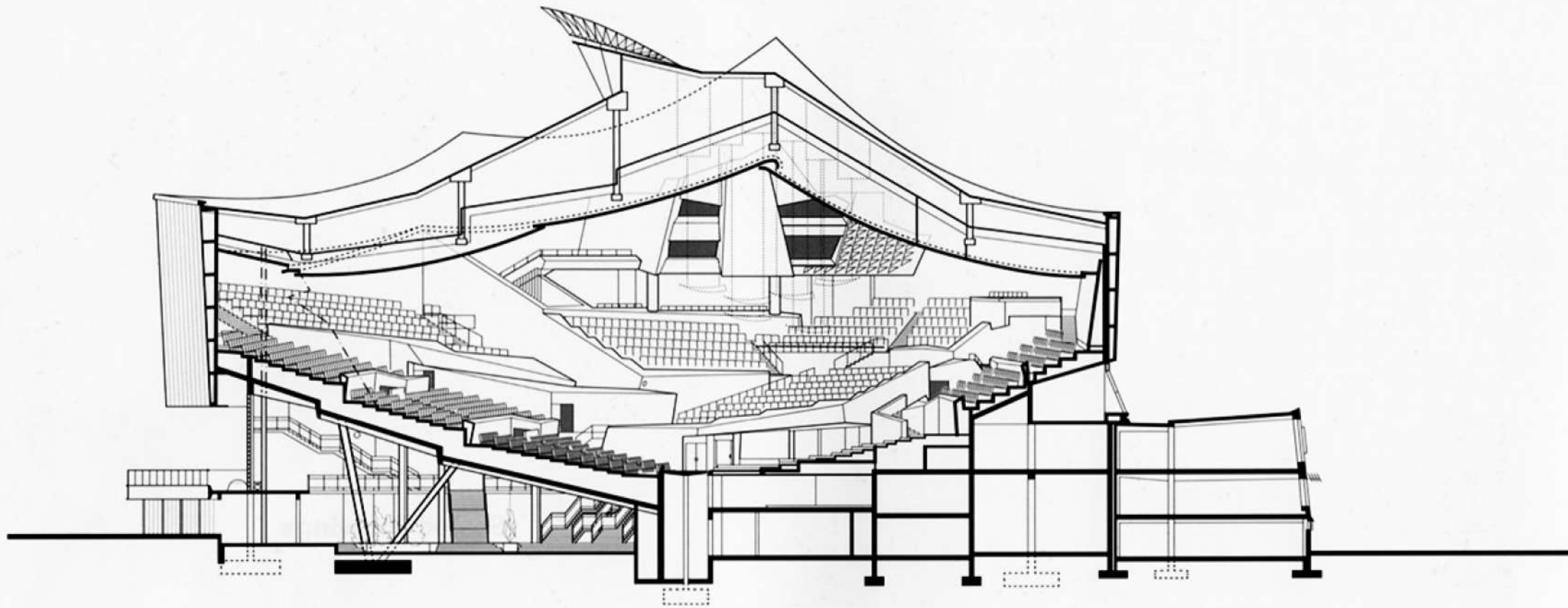








Plan, Level 4-6 meters  
1 500



Longitudinal Section  
1 500















The image shows the exterior of the Staatsbibliothek zu Berlin building. The building is a modern structure with a prominent white overhang above the entrance. The name 'STAATSBIBLIOTHEK ZU BERLIN' is written in large, black, sans-serif capital letters across this overhang. The building's facade is composed of light-colored panels and large glass windows. The sky is blue with some light clouds, and there are green trees on the left side of the frame.

STAATSBIBLIOTHEK ZU BERLIN

BIBLIOTECA NACIONAL DE BERLÍN  
(STAATSBIBLIOTHEK)



