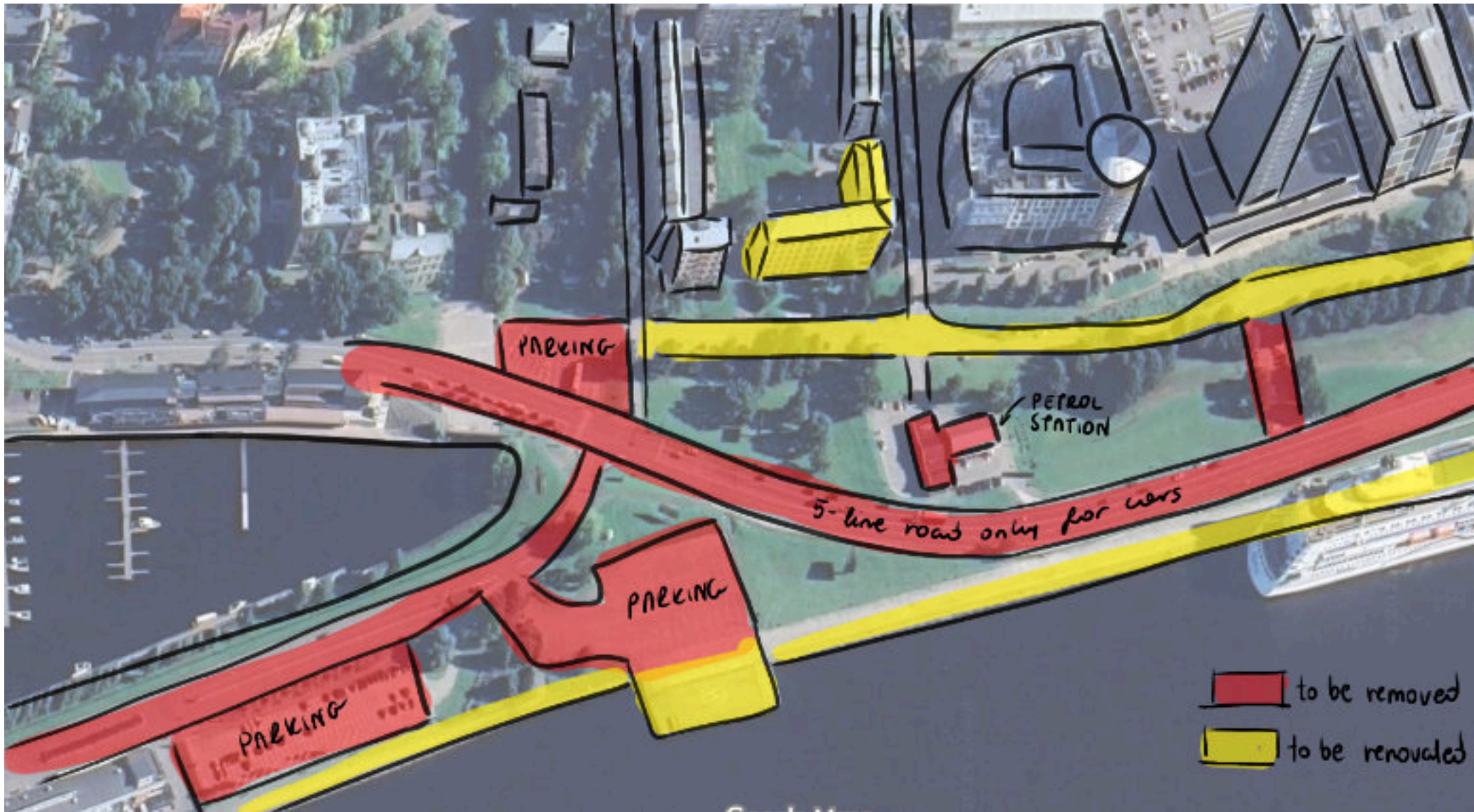
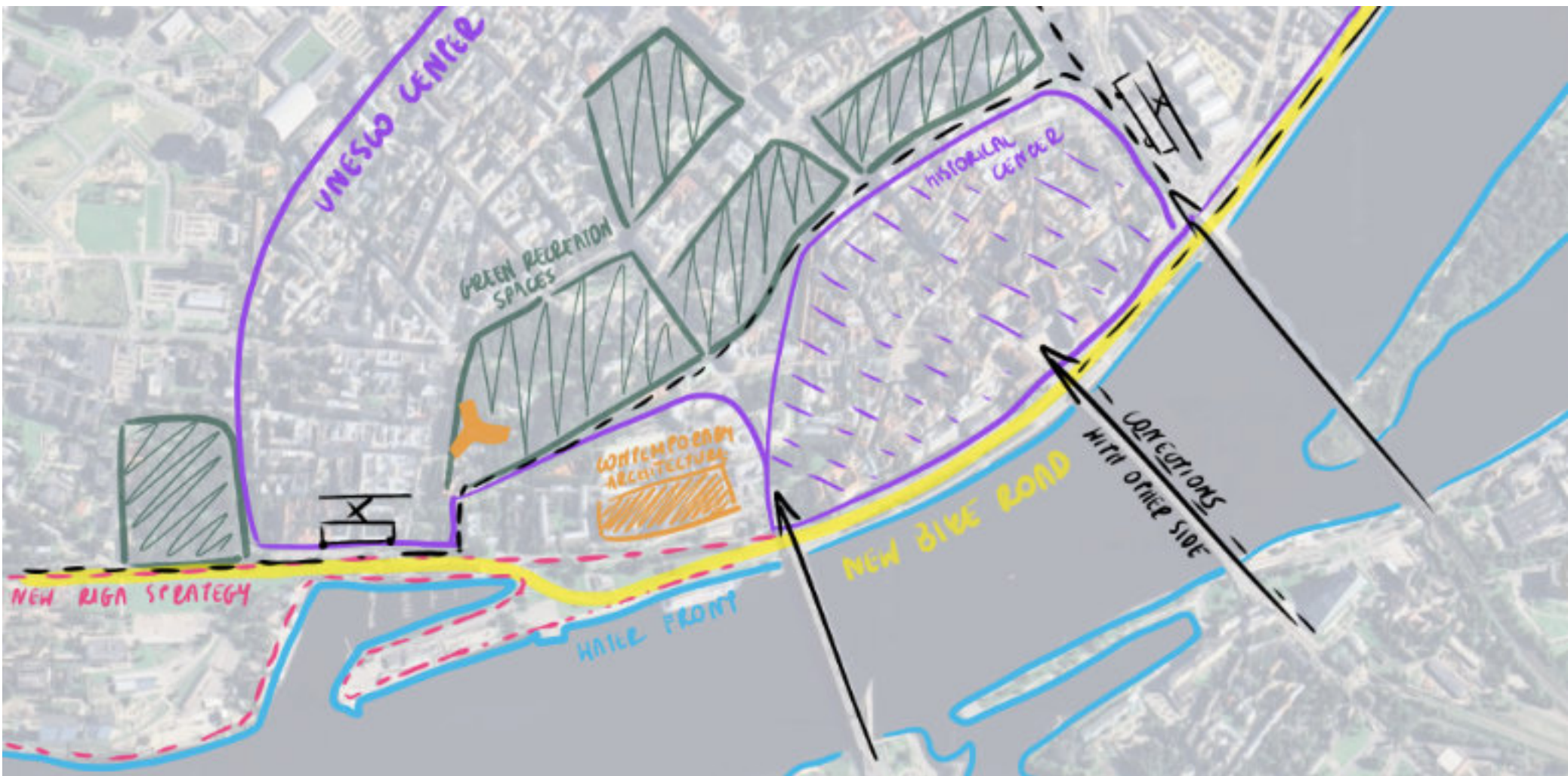


# Site analysis

# Riga - Latvia



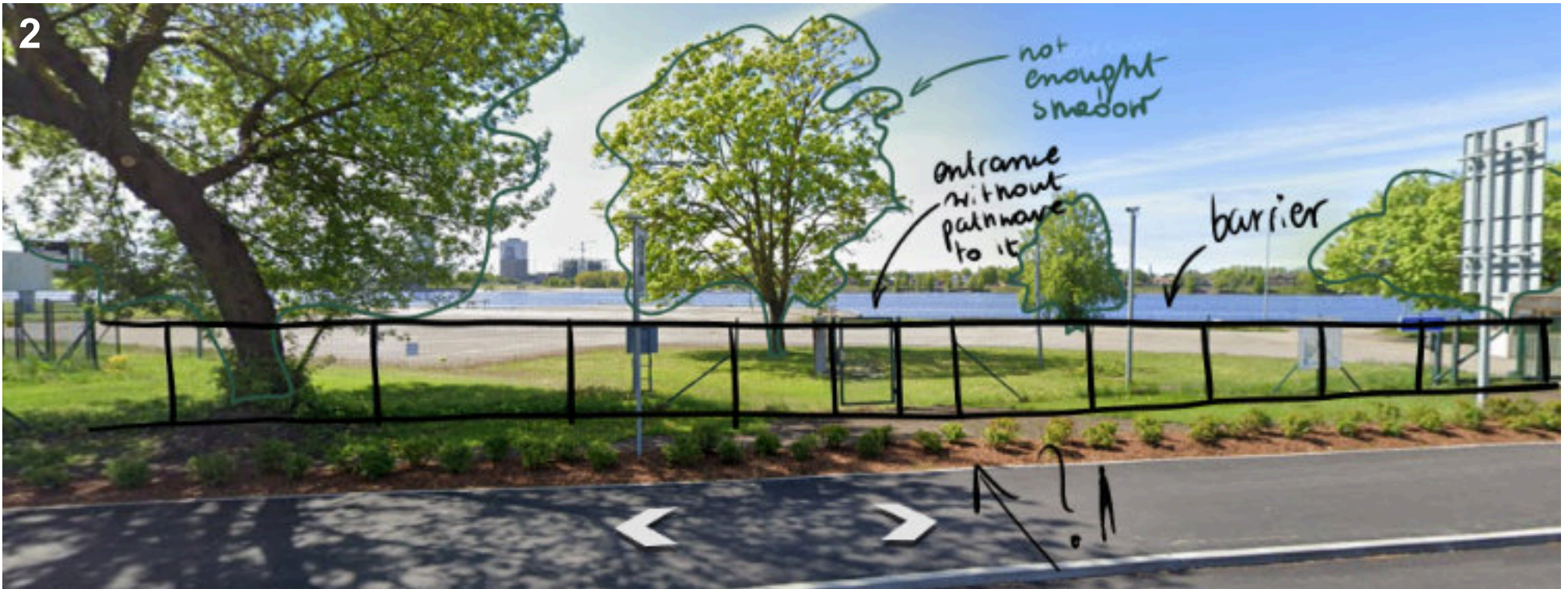
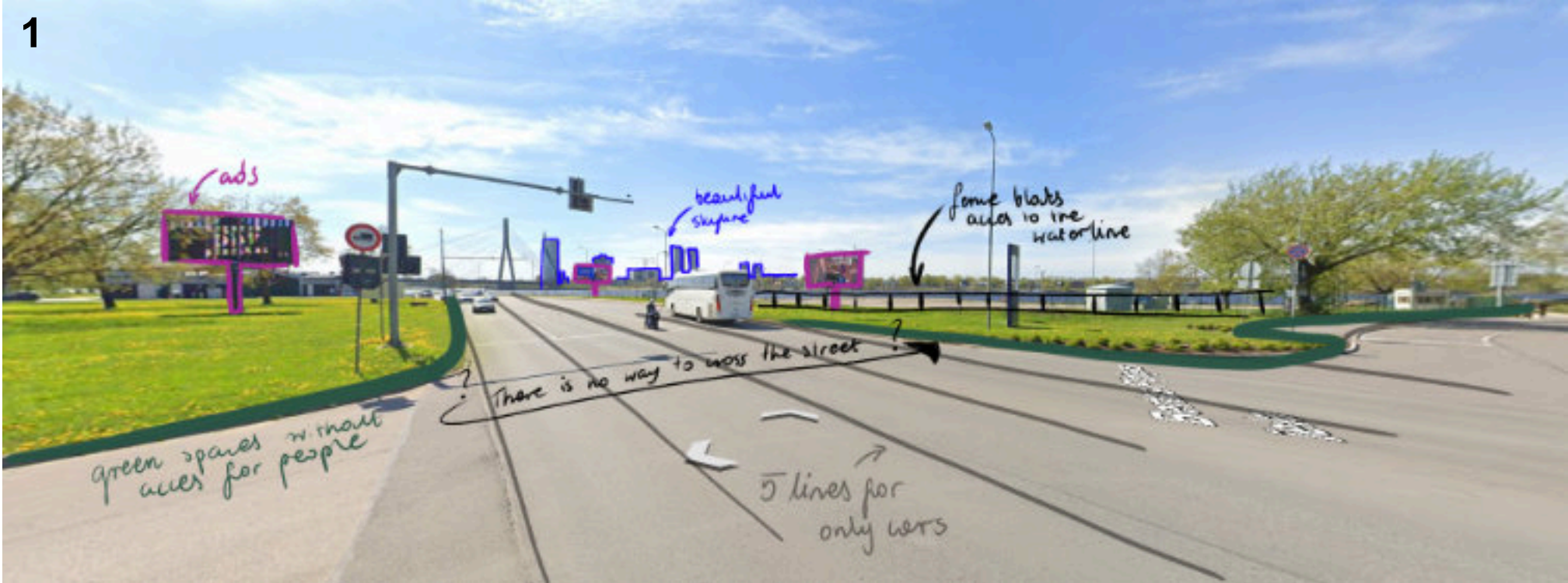
The plot holds significant assets: its attractive location near the city center, excellent transportation links, and substantial amounts of undeveloped space within an area of new construction and proximity to the waterfront.

However, the diagnosis reveals a clear wasted potential. The prime waterfront space remains inaccessible to the public, the area is heavily dominated by vehicular traffic, and there is a notable lack of recreational greenery. While the location itself is attractive due to its central proximity and topographic advantage of being near water, the current use is inadequate. This aligns with the city's existing plans to densify the zone and transition away from its outdated industrial character.



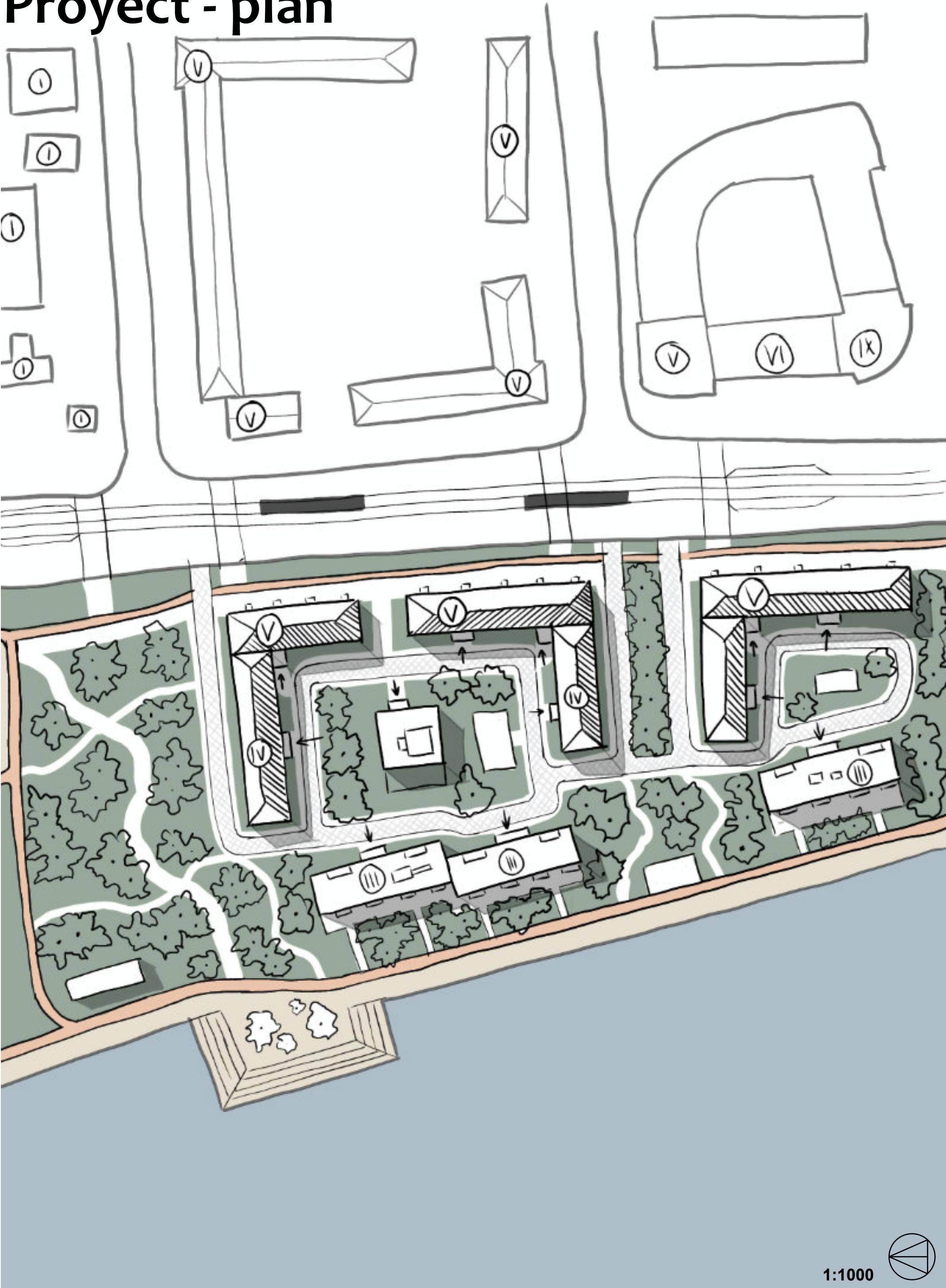
# Site analysis

# Riga - Latvia





Proyect - plan



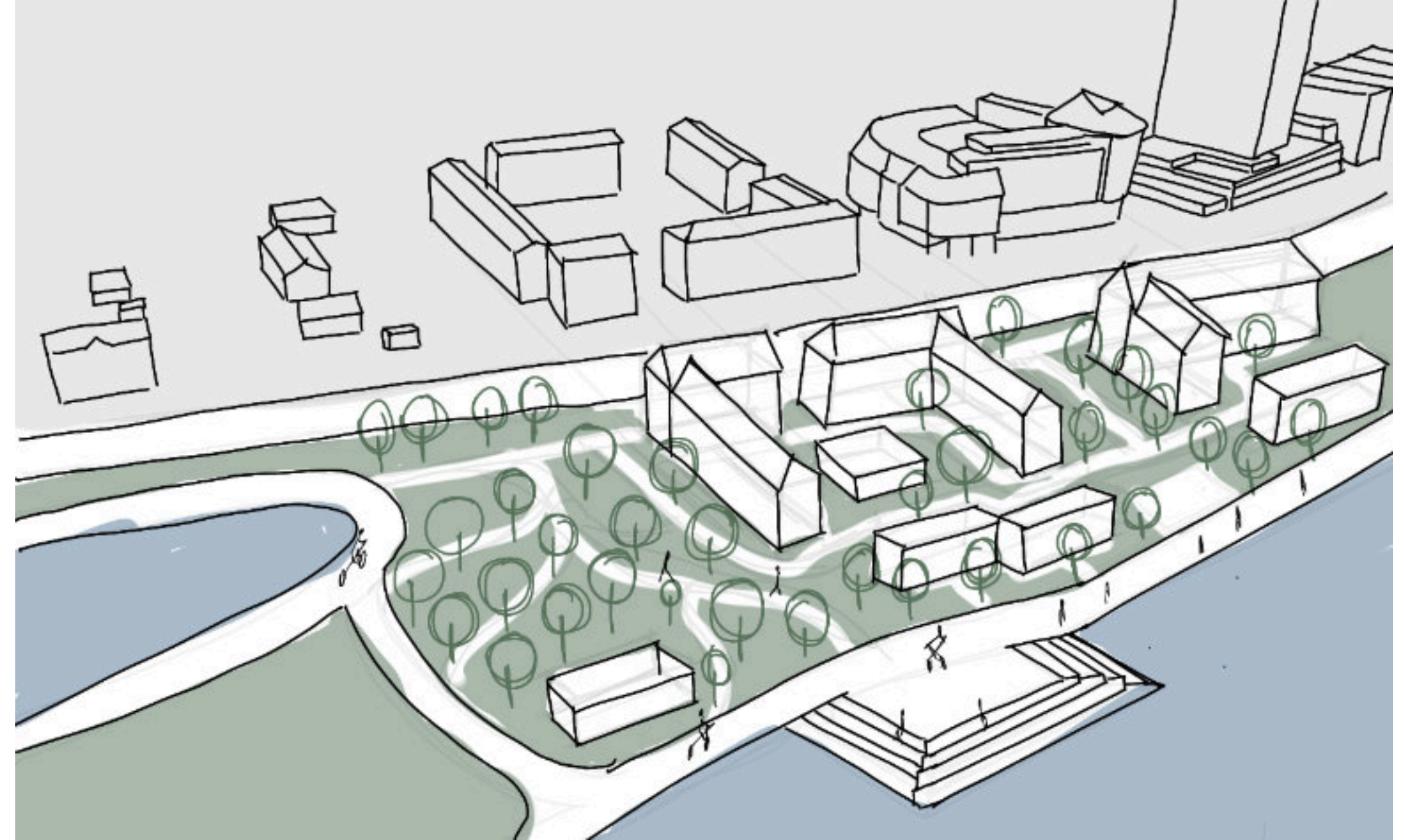
Riga - Latvia





# Project

# Riga - Latvia



## PROPOSED SOLUTION:

The solution involves relocating through traffic to a parallel road and fundamentally restructuring the street network by shifting the main artery away from the waterfront. This creates space for new recreational green areas and services. The area will be densified with perimeter-block residential buildings along the new main street, mirroring the existing urban fabric on the opposite side. A key priority is the prioritization of public transport through the introduction of a new tram line. Simultaneously, cycling will be prioritized along the waterfront with a dedicated, fast, and attractive bicycle route connecting the riverbanks. Pedestrian movement along the water will also be enhanced, creating an attractive, continuous promenade with improved walking access to the city center. The final outcome will be the creation of new, vibrant green spaces dedicated to public recreation.

