

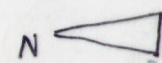
TÚNEZ

URBANISMO I.

URBAN GAME OS. ARQUITESTURAS

ROCÍO MARTÍNEZ GONZÁLEZ

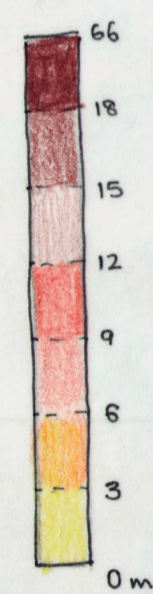
M^ª TERESA MOYA RODRÍGUEZ



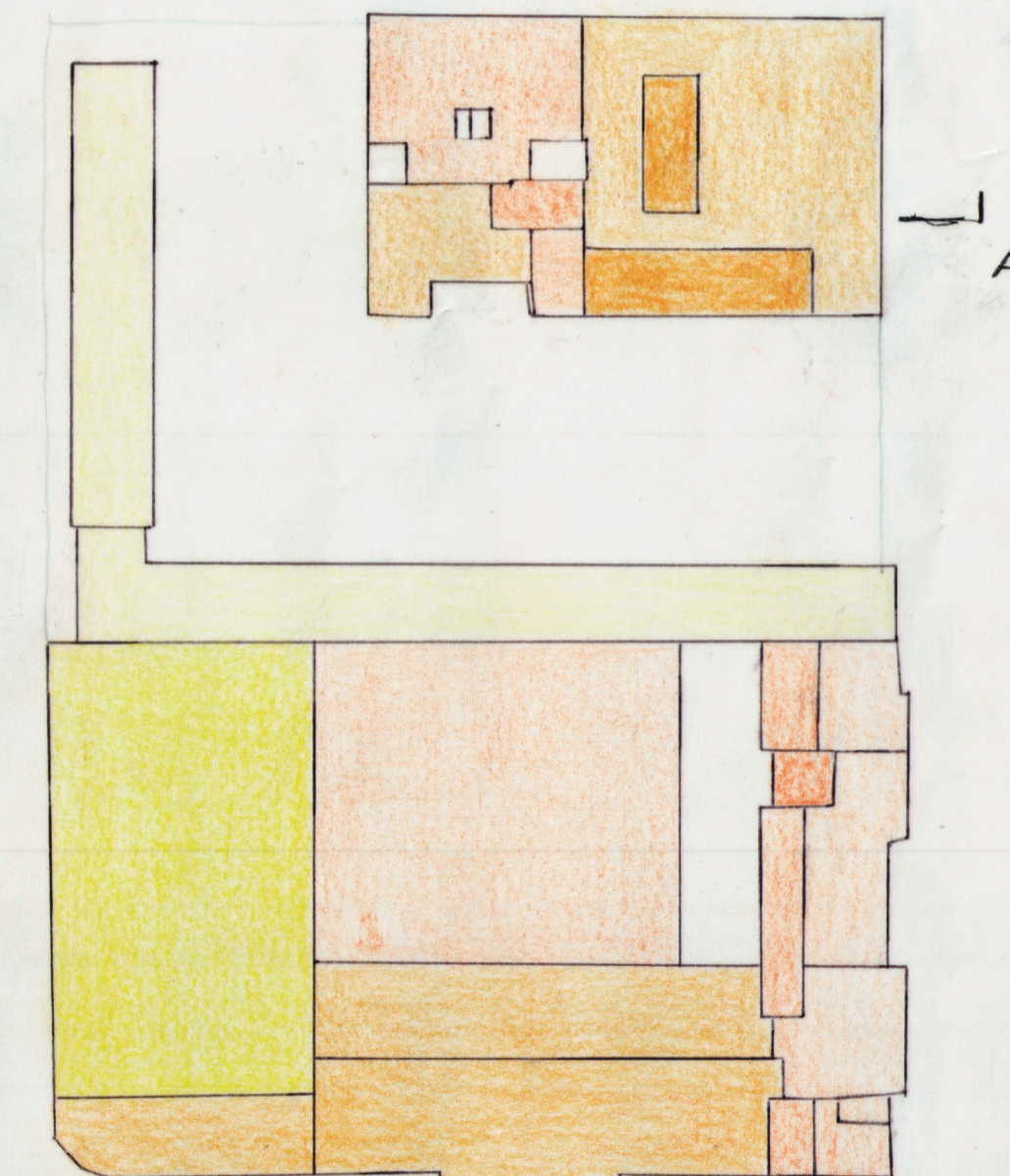
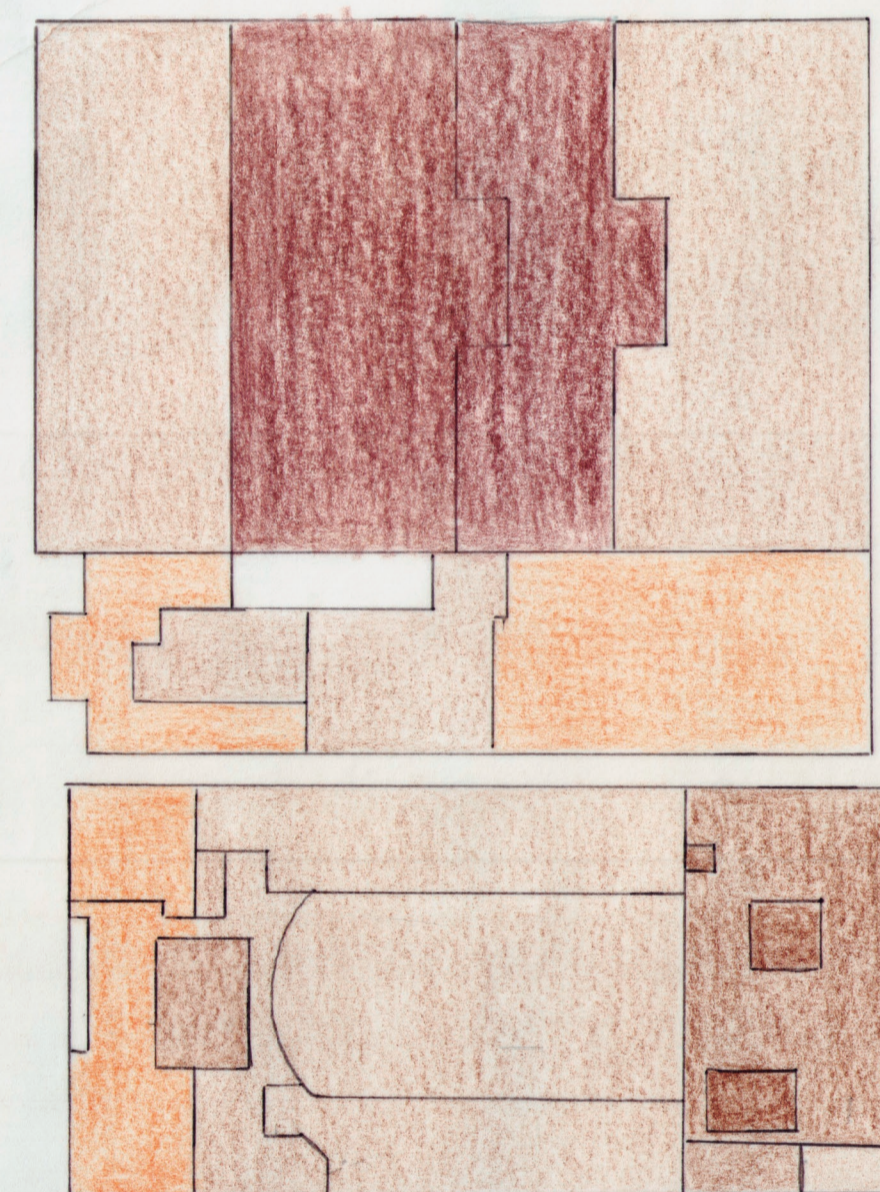
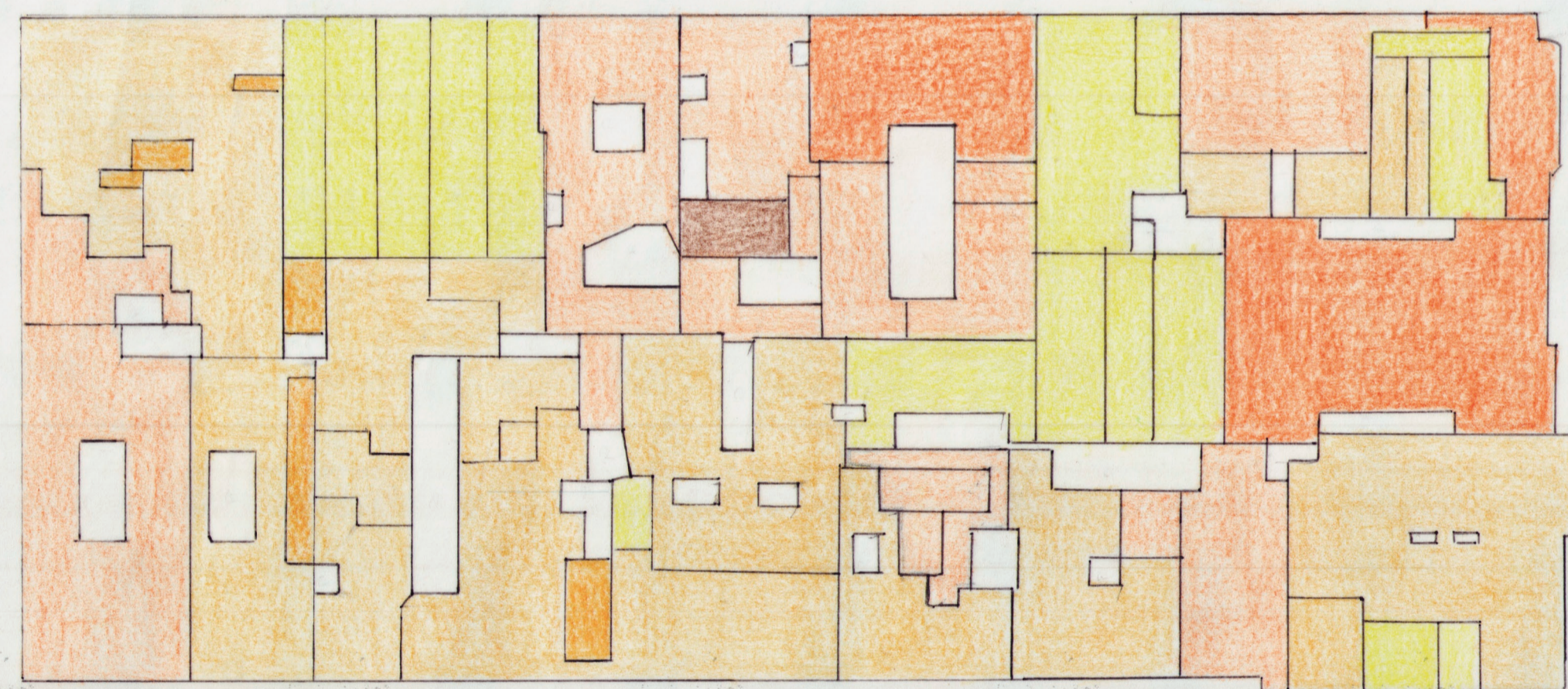
- ZONA DE ALTA DENSIDAD
- CASAS-PATIO
- SOLARES CON OCUPACIÓN < 50%
- ZONAS VERDES



E: 1/1500
0 500 1000 2000 3000 4000 5000 (m)



A



75-

60-

45-

30-

15-

12-

9-

6-

+3-

COTAO



SECCION A-A'

E: 1/500
0 50 100 200 300 400 500 (m)