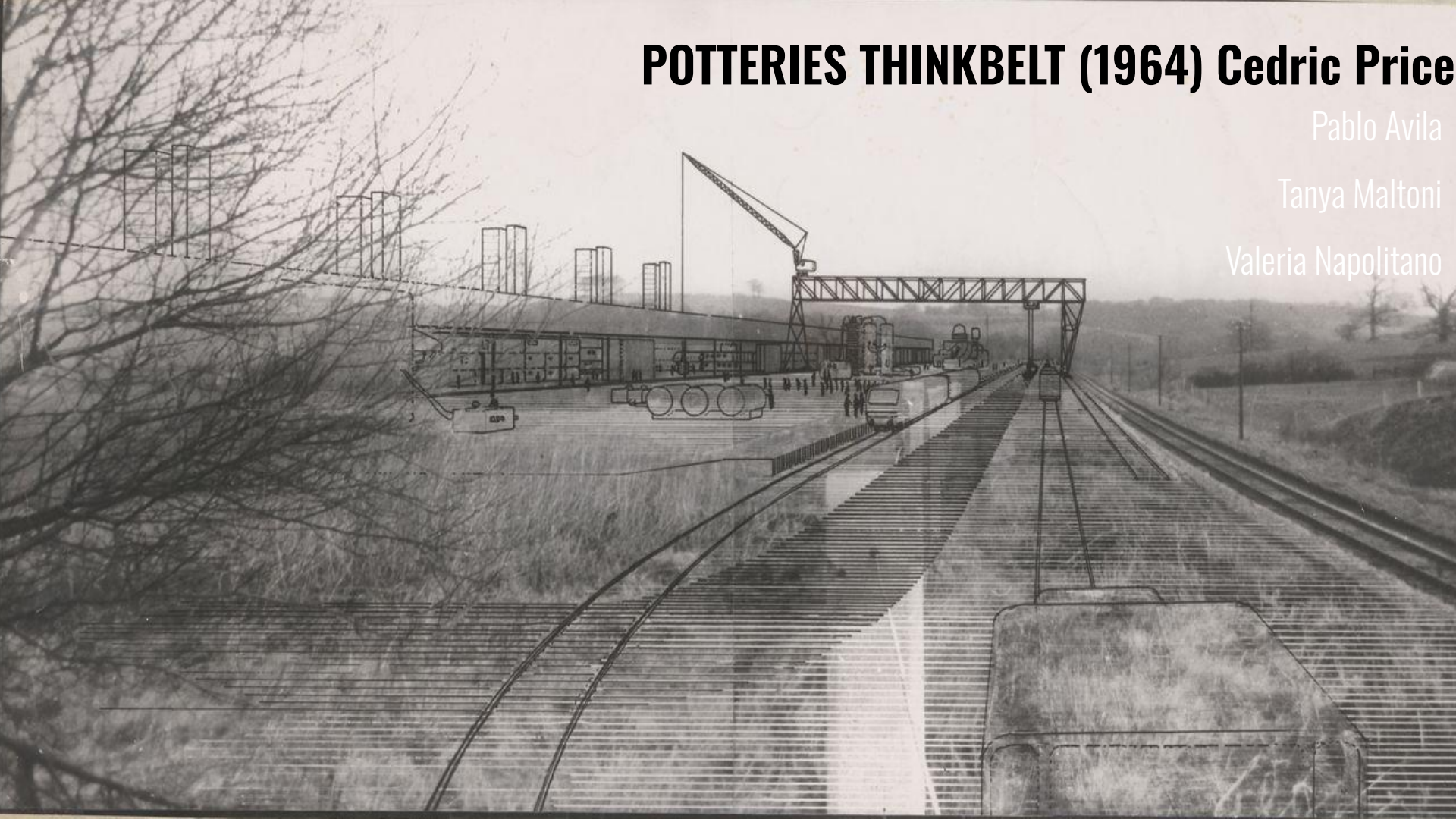


POTTERIES THINKBELT (1964) Cedric Price

Pablo Avila

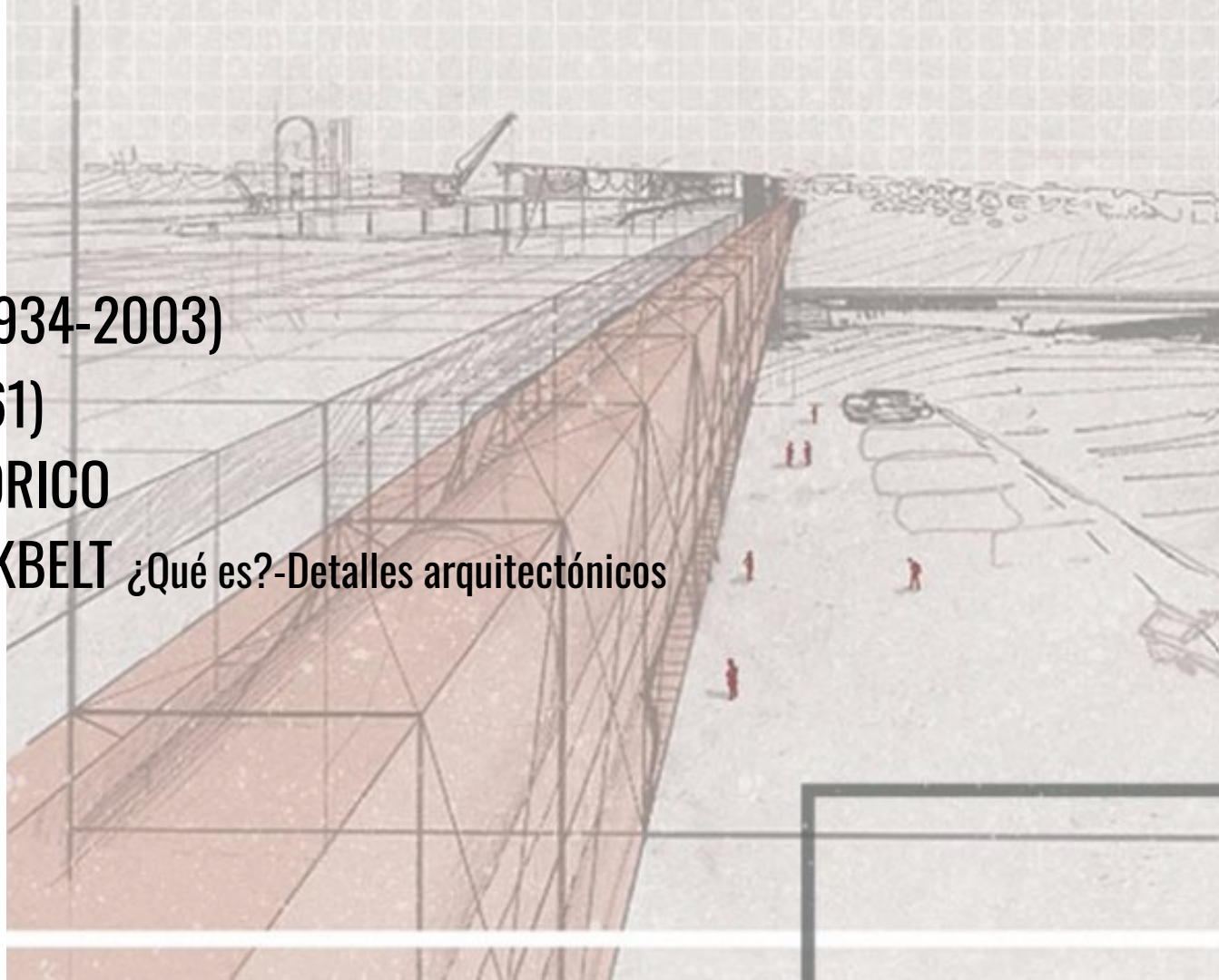
Tanya Maltoni

Valeria Napolitano



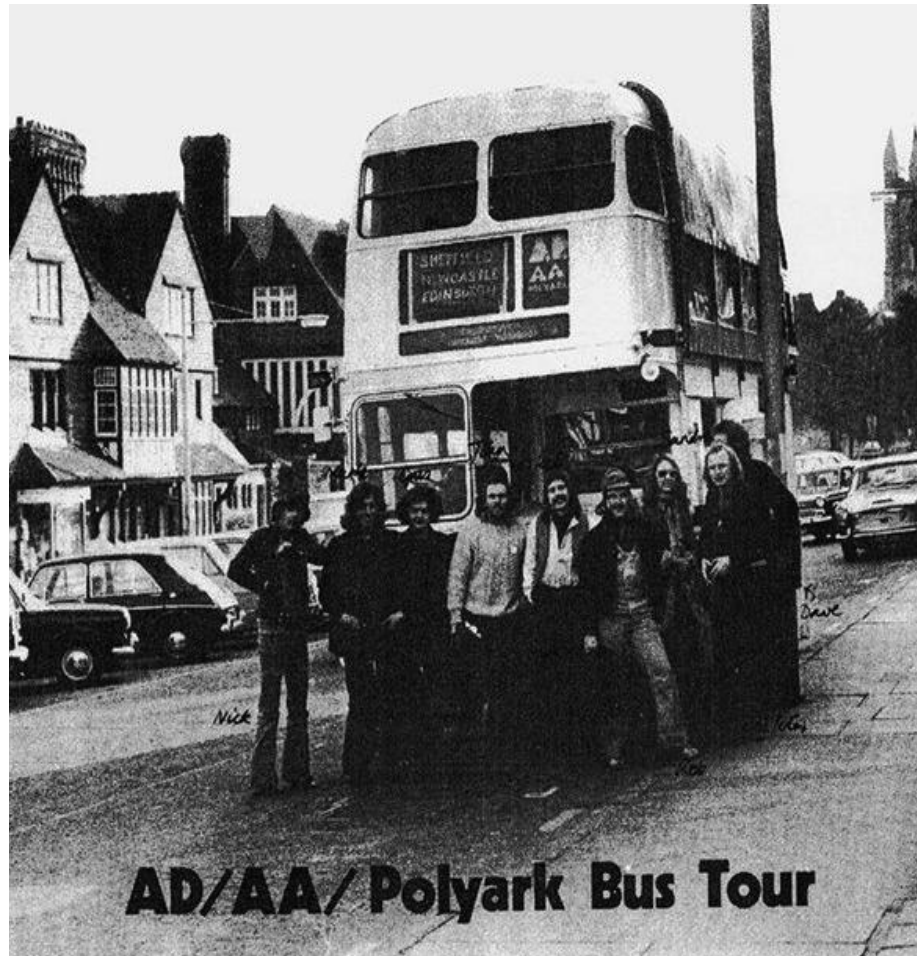
Índice:

1. CEDRIC PRICE (1934-2003)
2. FUN PALACE (1961)
3. CONTEXTO HISTÓRICO
4. POTTERIES THINKBELT ¿Qué es?-Detalles arquitectónicos
5. REFLEXIONES
6. BIBLIOGRAFÍA

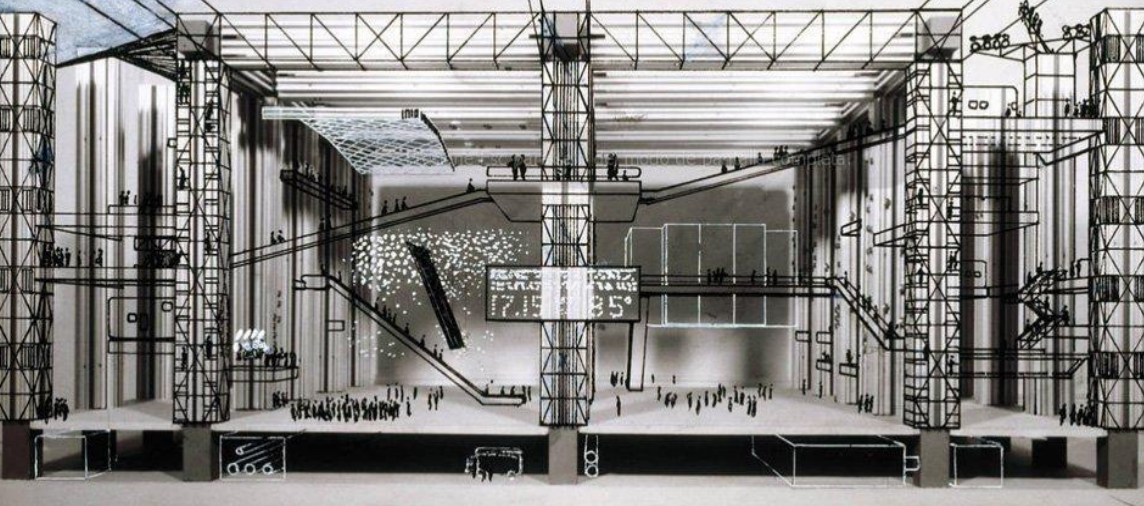




Cedric Price (1934-2003)

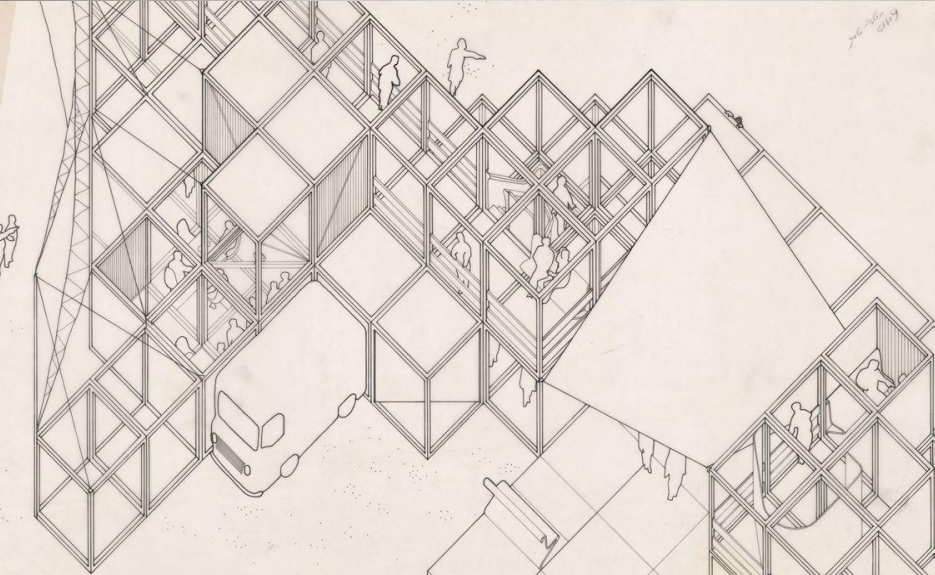


AD/AA/Polyark Bus Tour



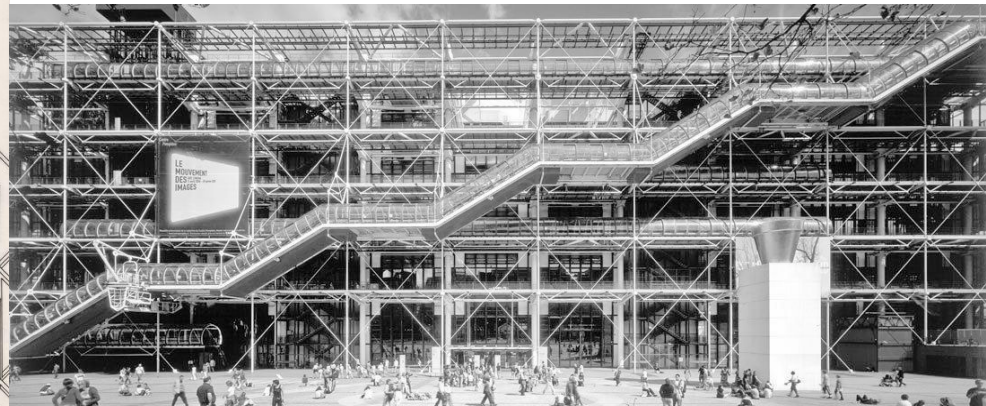
FUN PALACE (1961)

Cedric Price



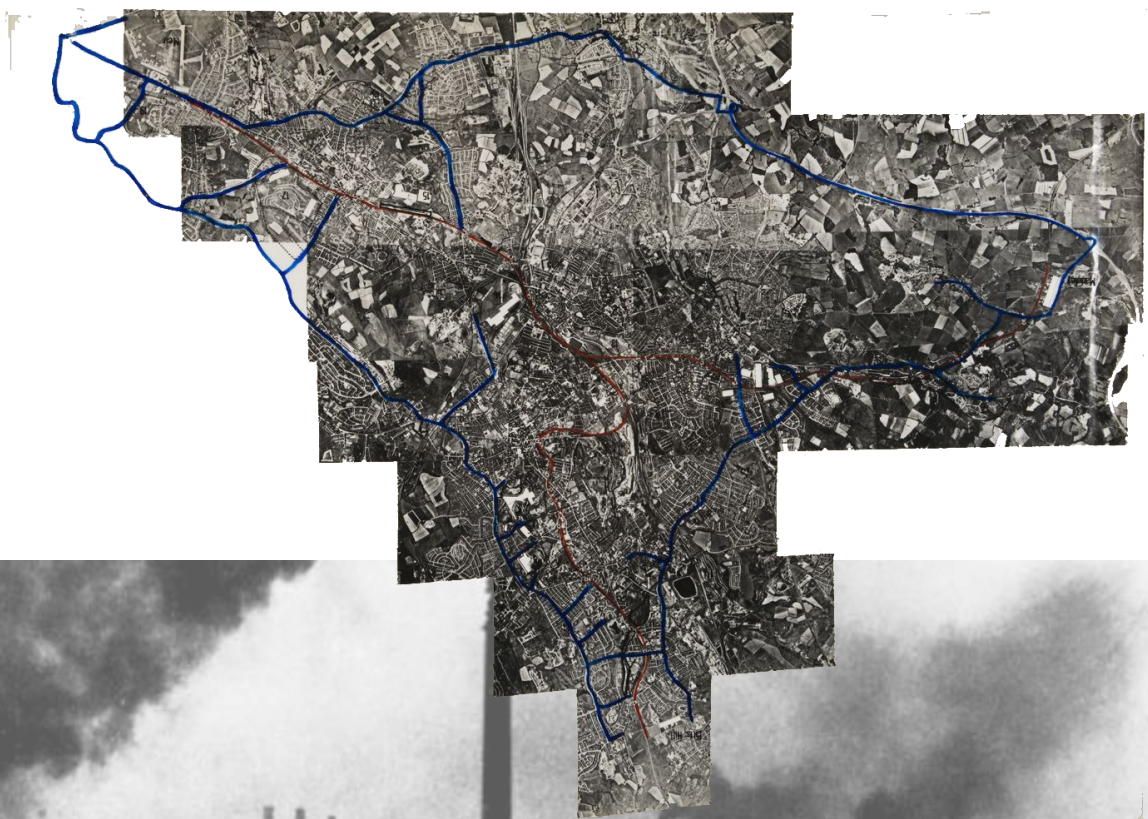
CENTRE POMPIDOU (1977)

Renzo Piano, Richard Rogers



NORTH STAFFORDSHIRE:

Paisaje de ruina industrial













“Un lugar árido y sucio, toscos terrenos industriales. Gran parte de las fábricas han desaparecido y la tierra está agotada, pero no es un páramo deshabitado, todavía mucha gente vive allí. En estas cien millas cuadradas que ocupa el Thinkbelt hay muy pocos árboles, muchos pozos, muchos viejos almacenes y muchas vías de tren en desuso.”






Cedric Price.



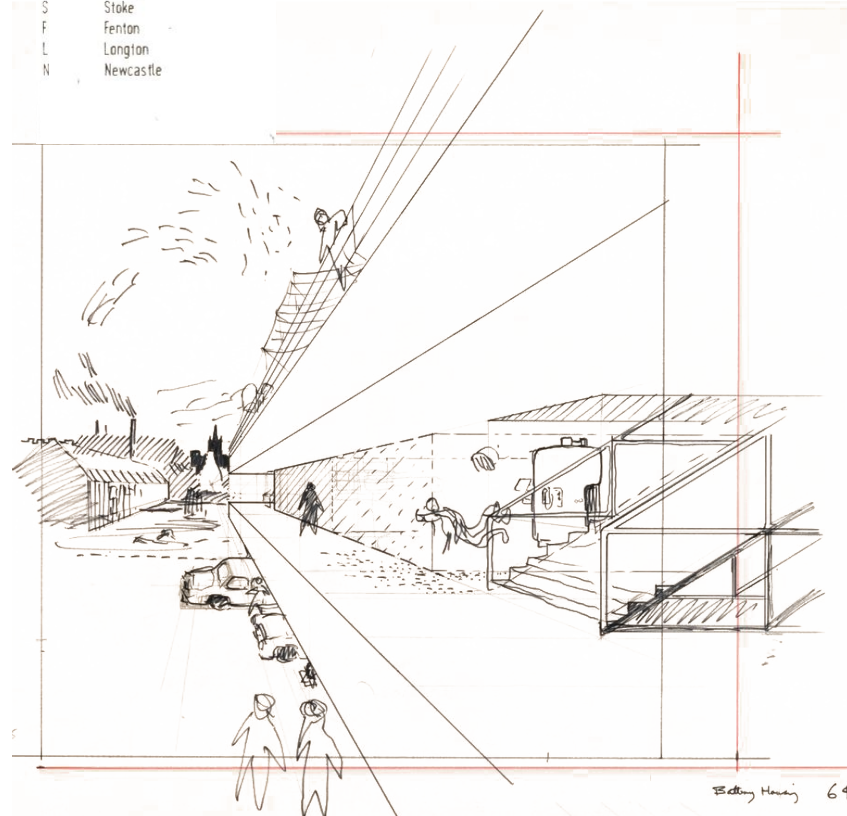
POTTERIES THINKBELT

KEY

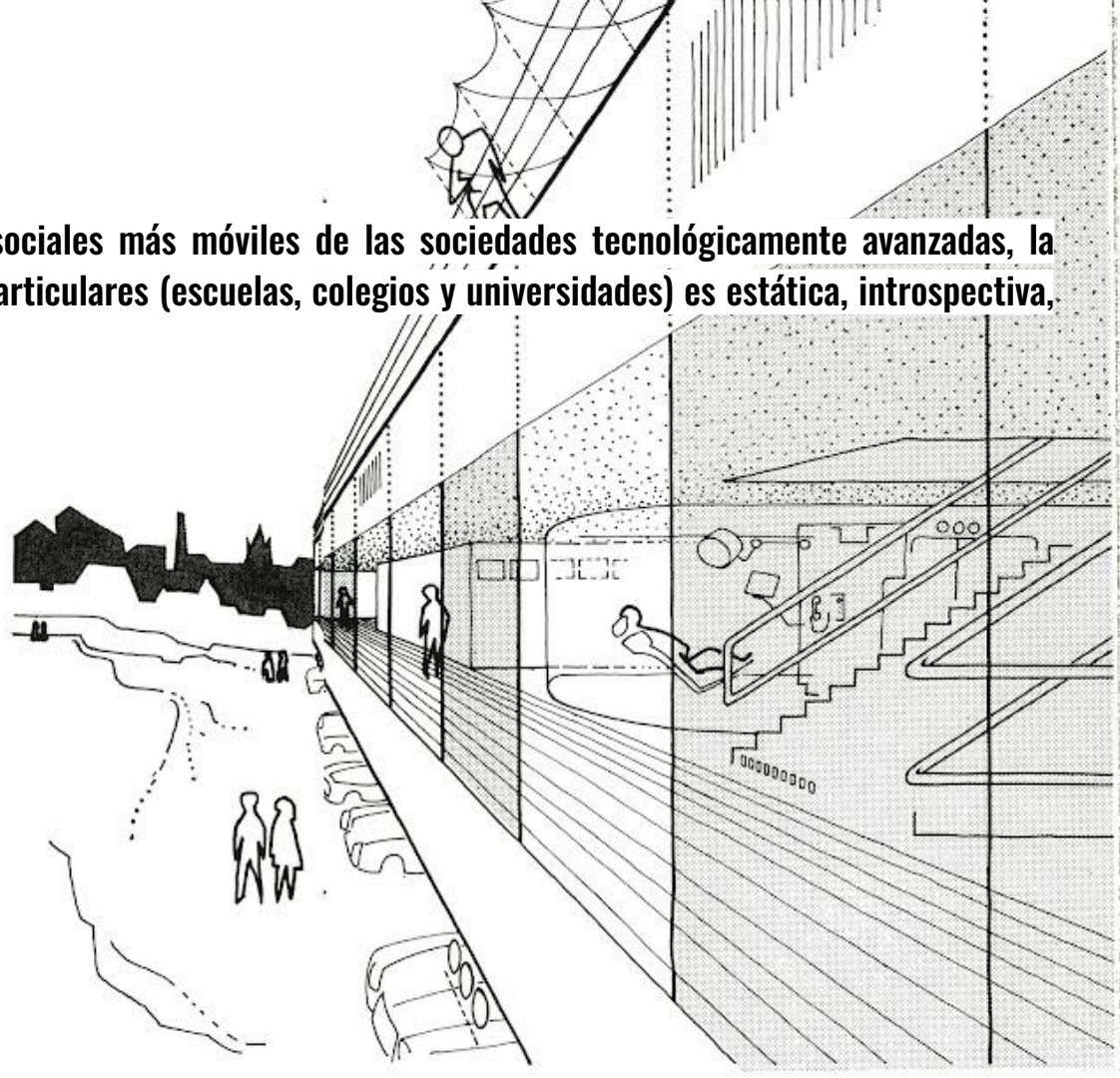
-  PTB roadnet
-  PTB rail net
-  motorway
-  road transport link
-  rail transport link
-  main line rail link
-  motorway link
-  air link

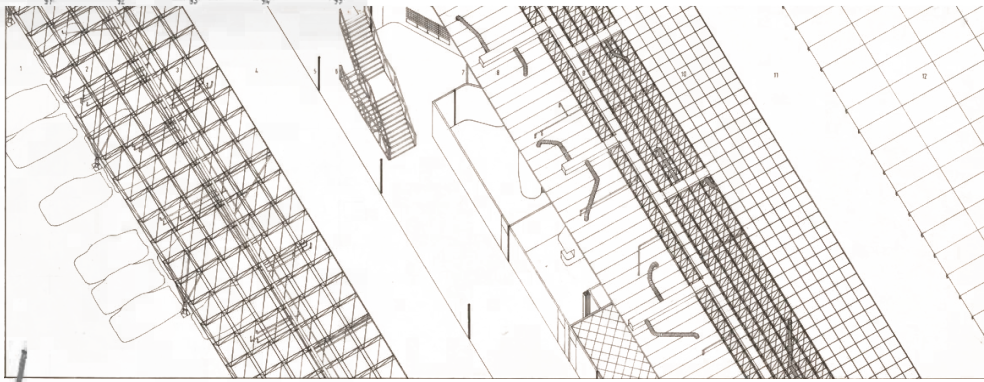
-  transfer area
-  facility area or siding
-  housing : low density
-  housing : high density
-  existing built-up area

- T Tunstall
- B Burslem
- H Hanley
- S Stoke
- F Fenton
- L Longton
- N Newcastle

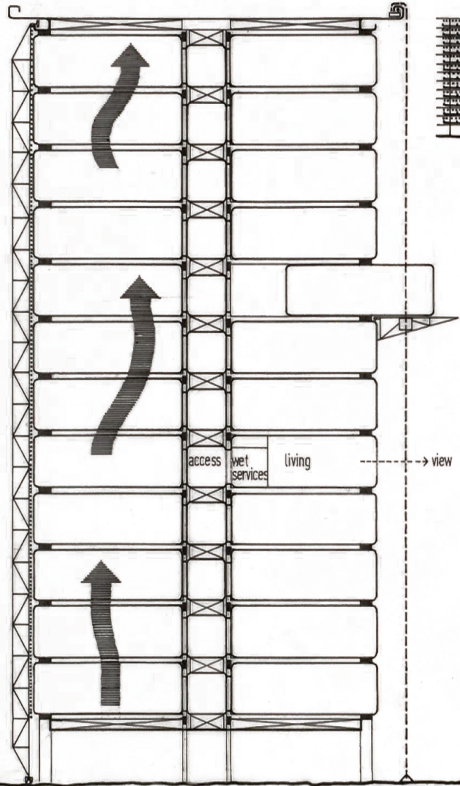


“Si bien los estudiantes son uno de los grupos sociales más móviles de las sociedades tecnológicamente avanzadas, la naturaleza de sus propias plantas de producción particulares (escuelas, colegios y universidades) es estática, introspectiva, provinciana, inflexible y no es muy útil”.



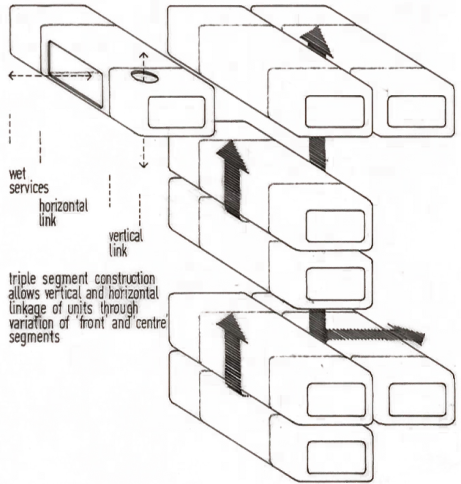
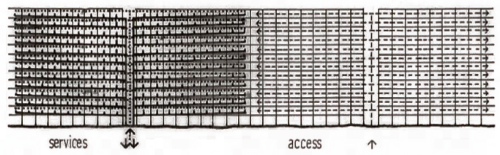


CROSS SECTION
scale 1/16" = 1' 0"



vertical travelling autocleanse boom
background temperature control within total sealed envelope
service / access spine
self powered mobile cable hoist

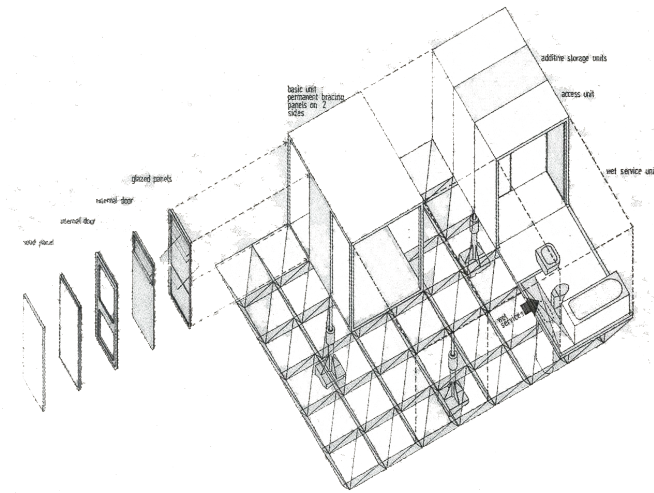
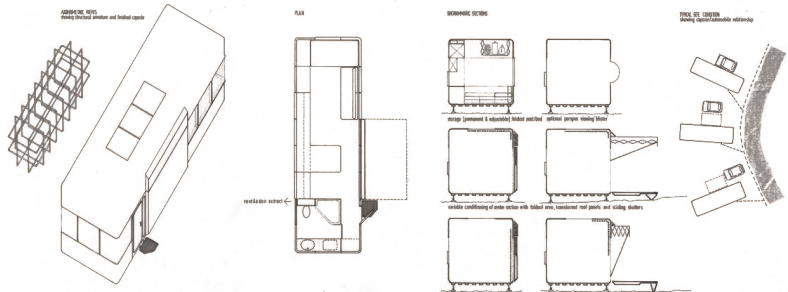
DIAGRAMMATIC LONGITUDINAL SECTION
scale 1:1250



wet services
horizontal link
vertical link
triple segment construction allows vertical and horizontal linkage of units through variation of front and centre segments

2 and 3 unit linkage

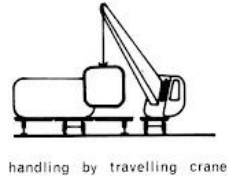
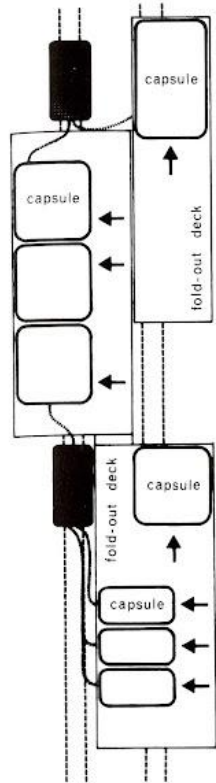
ELEMENTOS MODULARES MÓVILES



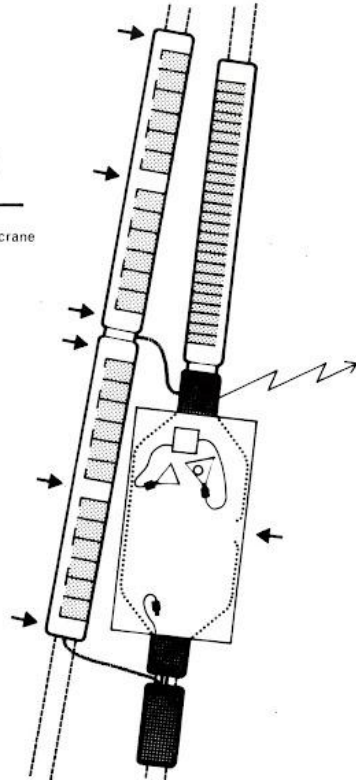
basic unit permanent bracing panels on 2 sides
storage units
access unit
wet service unit

ELEMENTOS MODULARES MÓVILES

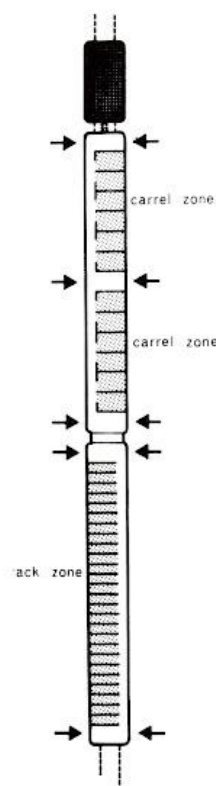
specialized or fine control enclosures
sited on fold-out decking units



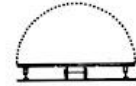
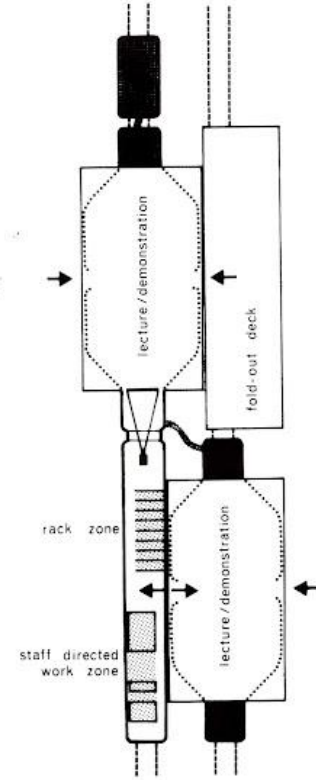
typical condition at small existing siding
with carrel units linked to televised
lecture/demonstration by closed circuit
or open transmission: ramp access



self teach carrel units
information & equipment
storage units



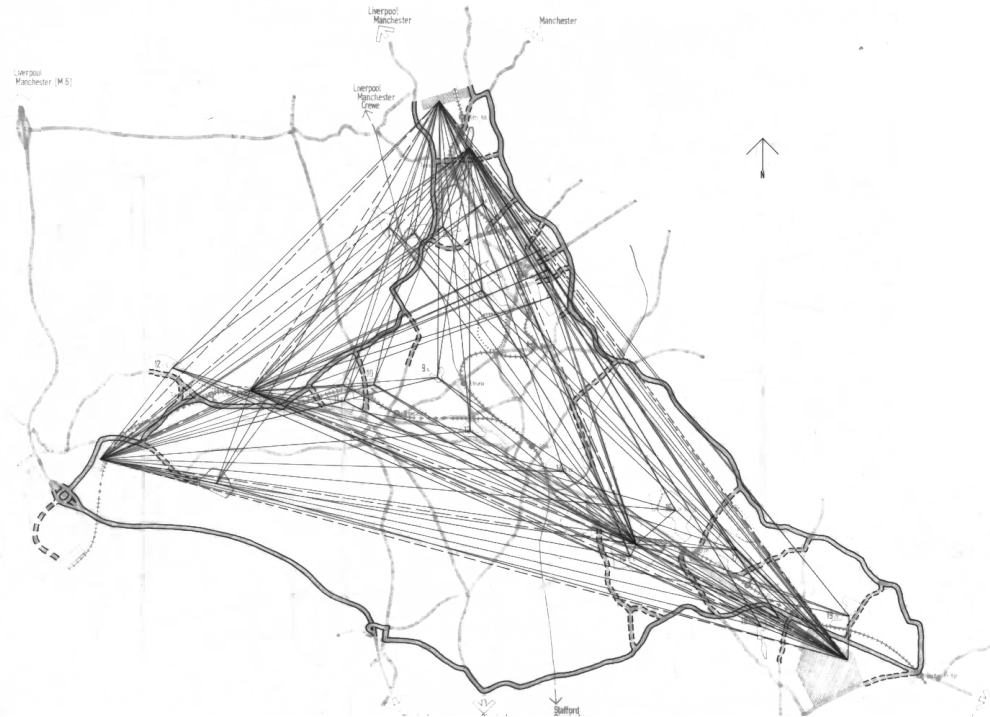
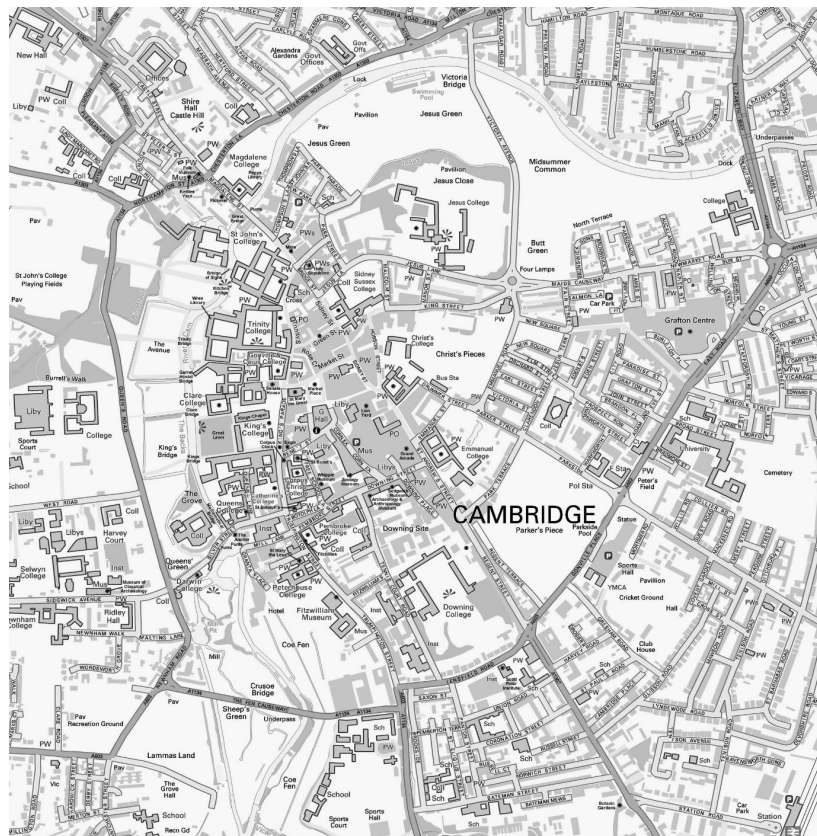
fold-out inflatable
lecture/demonstration units



erection sequence

Qué es lo que hace que este proyecto es tan importante?

UNA NUEVA IDEA DE UNIVERSIDAD

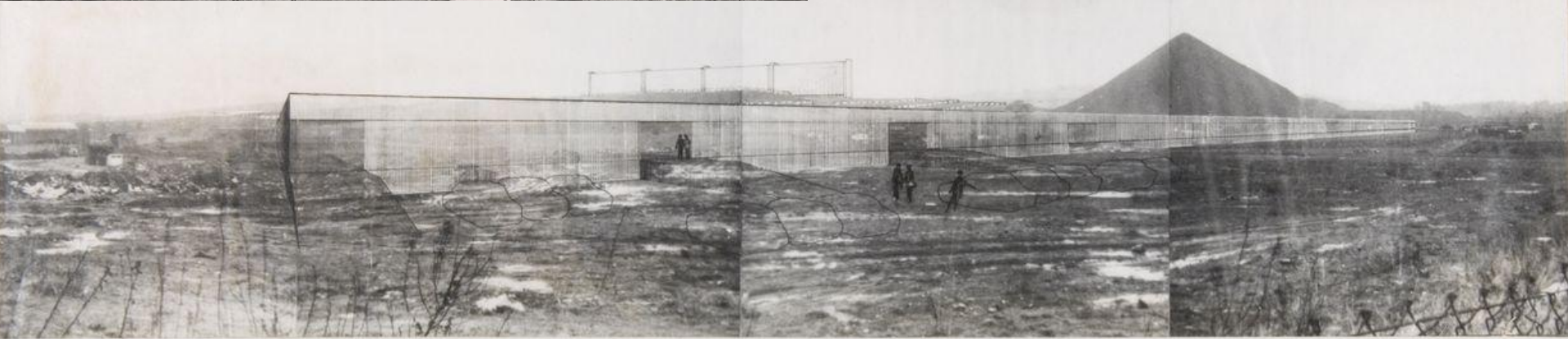


Qué es lo que hace que este proyecto es tan importante?

EL REUSO DEL EXISTENTE

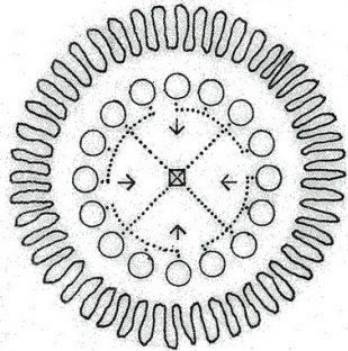


“ Lo existente no se borra, ni física ni mentalmente, sino que permanece allí, caracterizando el paisaje como parte indisoluble del mismo, como un terreno expectante para la “espontaneidad” urbana, pero siempre ajeno a una sustitución masiva y general que lo aleje demasiado rápido de sí mismo borrando su memoria.”

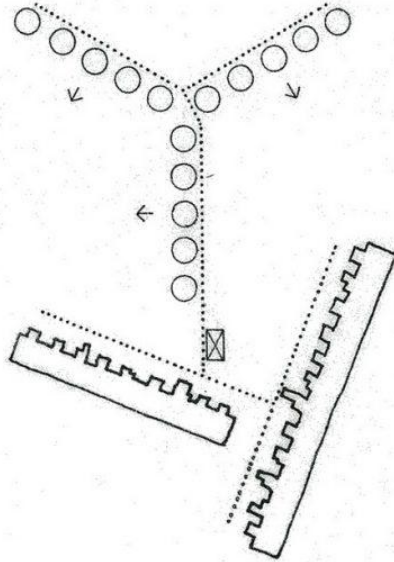


Qué es lo que hace que este proyecto es tan importante?

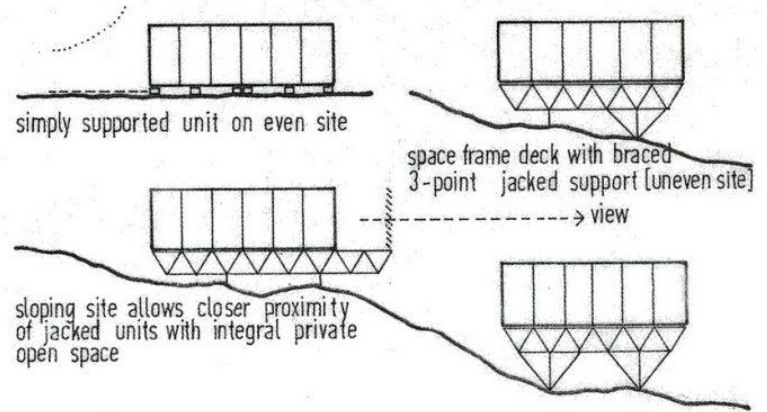
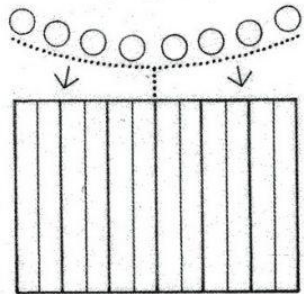
TEMPORALIDAD



circular grouping of units in unpleasant surrounding environment



sprawl servicing used to provide temporary rehabilitation for existing housing with 10-15 year structural life



simply supported unit on even site

space frame deck with braced 3-point jacked support (uneven site)

sloping site allows closer proximity of jacked units with integral private open space

“el mejor diseño es aquel que es manipulable”

BIBLIOGRAFÍA:

- <https://www.morethangreen.es/en/potteries-thinkbelt-by-cedric-price/>
- <https://archive.discoversociety.org/2014/07/01/the-thinkbelt-the-university-that-never-was/>
- <https://hacedordetrampas.blogspot.com/2010/10/potteries-thinkbelt-de-cedric-price.html>
- <https://proyectos4etsa.wordpress.com/2014/01/09/potteries-think-belt-cedric-price-1964/>
- https://www.academia.edu/44359129/Potteries_Thinkbelt_Cedric_Price