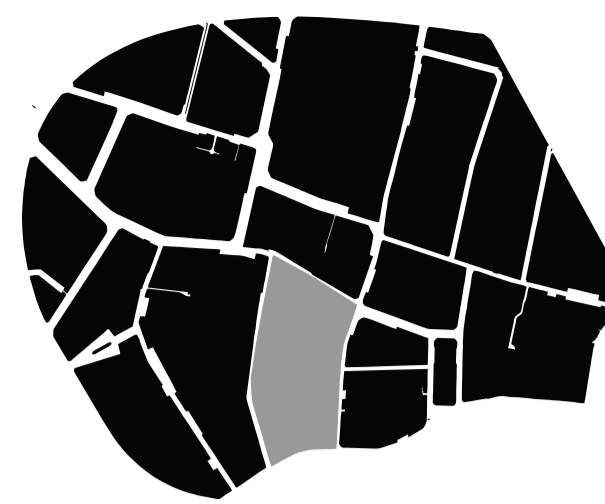
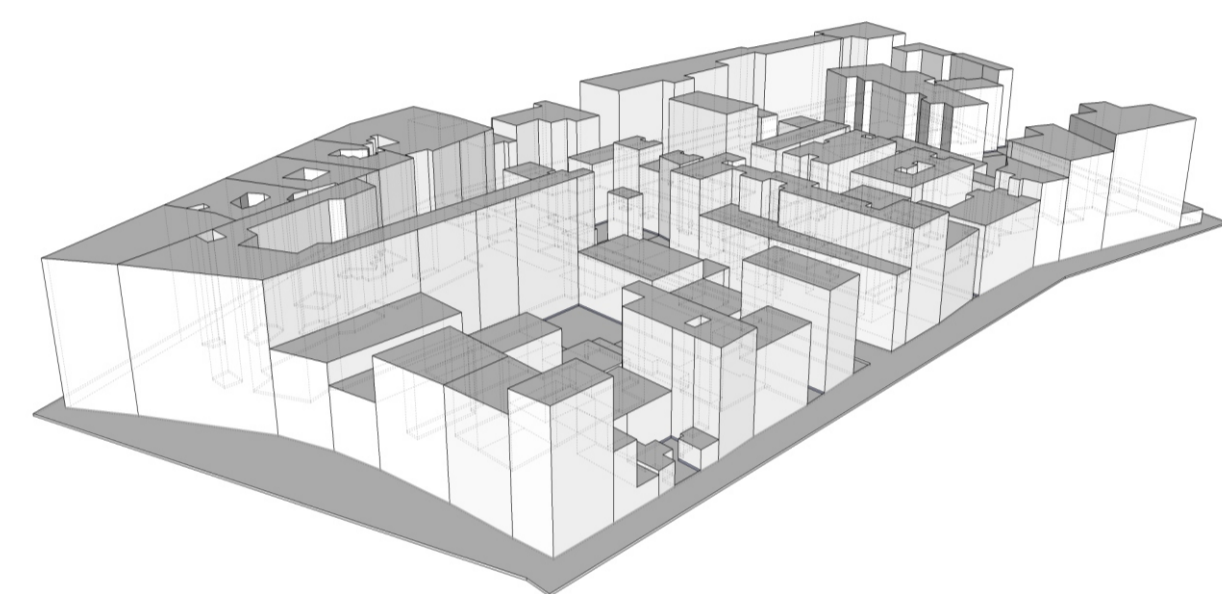




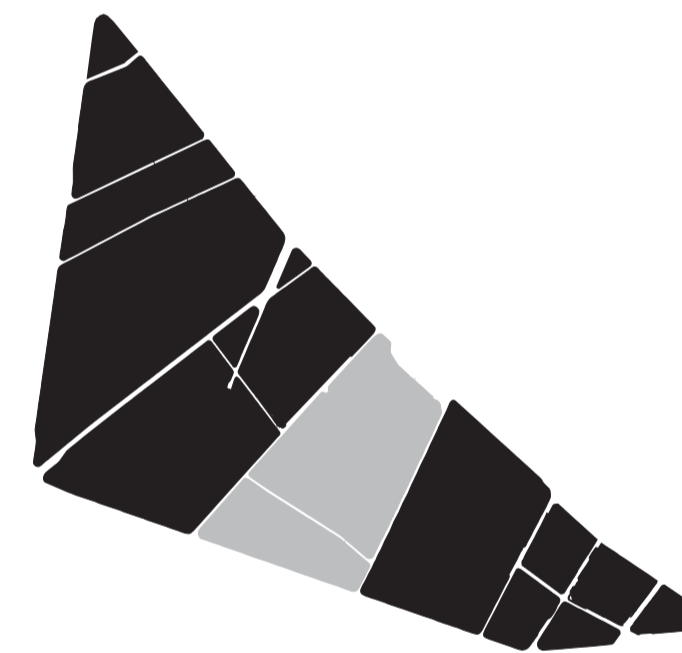
Edificabilidad... 2409,46m2 / 52172,77m2...
 Ocupacion... 42%
 N De alturas... 12 Plantas en promedio
 Retranqueo vial... 7,2m
 N De Edificaciones... 63 Edificaciones
 Area construida... 10175,2 mts



Tramas irregulares

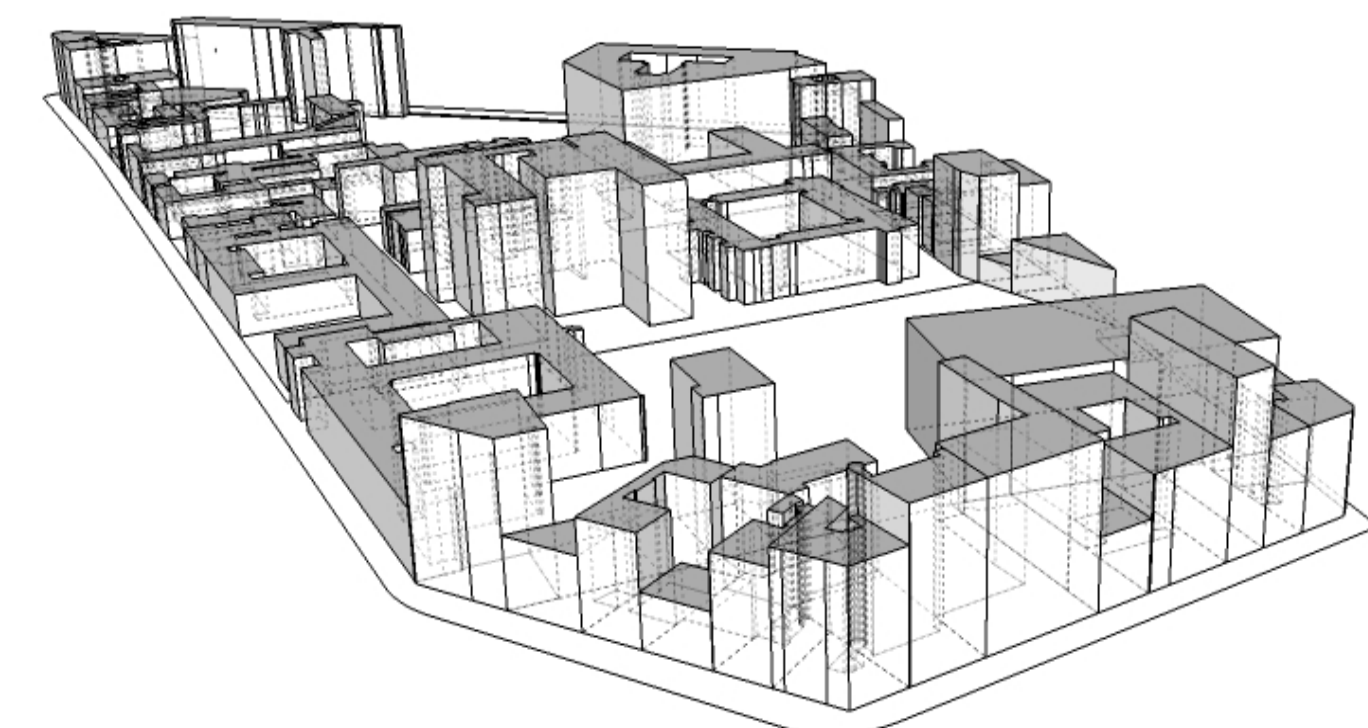
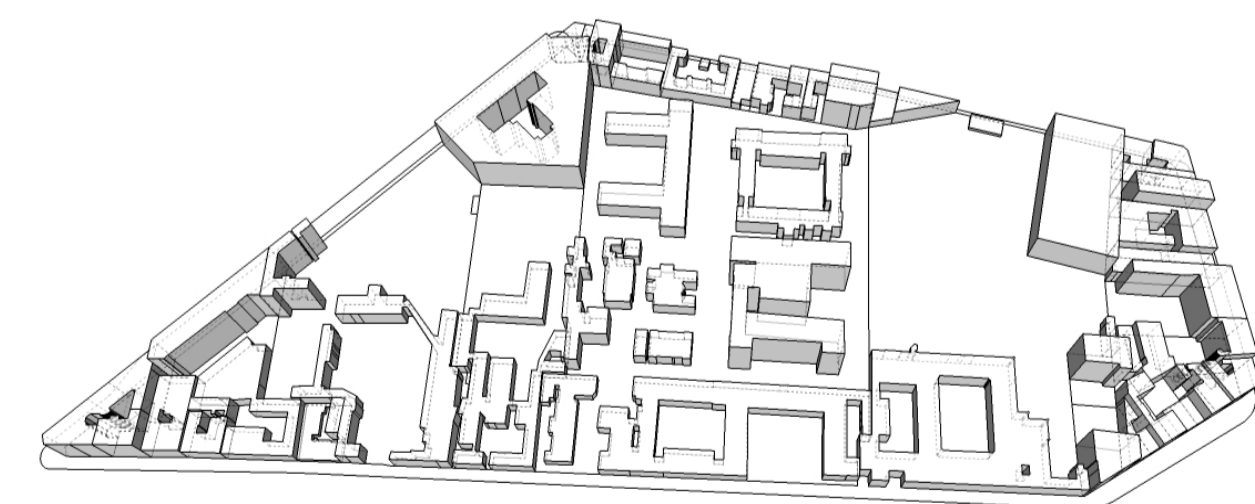


Edificabilidad... 36367m2 / 229057m2...
 Densidad... 395,52 Viviendas/Ha...
 Ocupacion... 33%
 N De alturas... 20
 Retranqueo vial... 6,8m
 N De viviendas... 3243 Viviendas



Trama reticulada

Trama irregular



Esc 1:10000
 N
 ↑