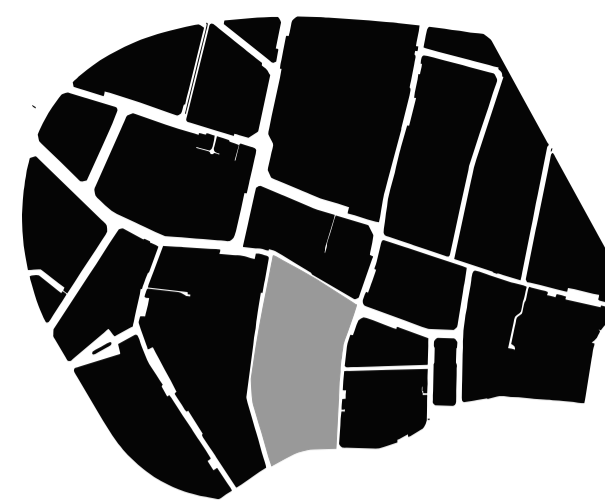
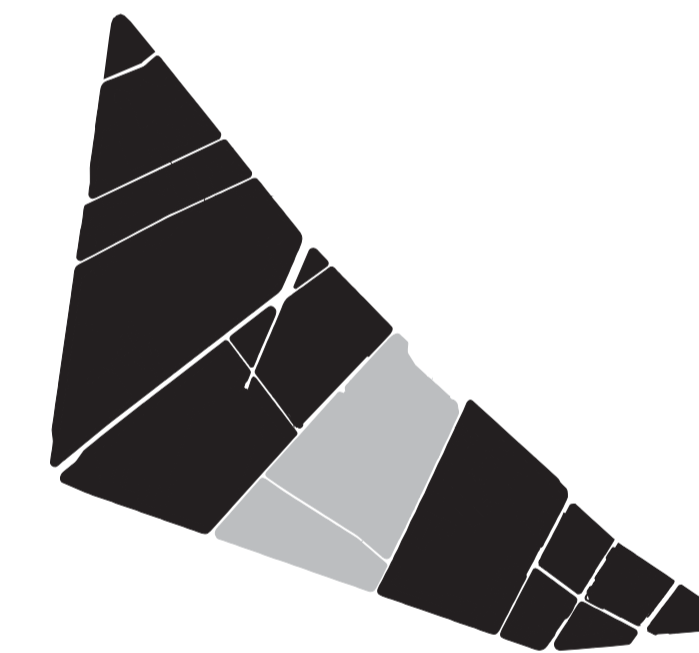
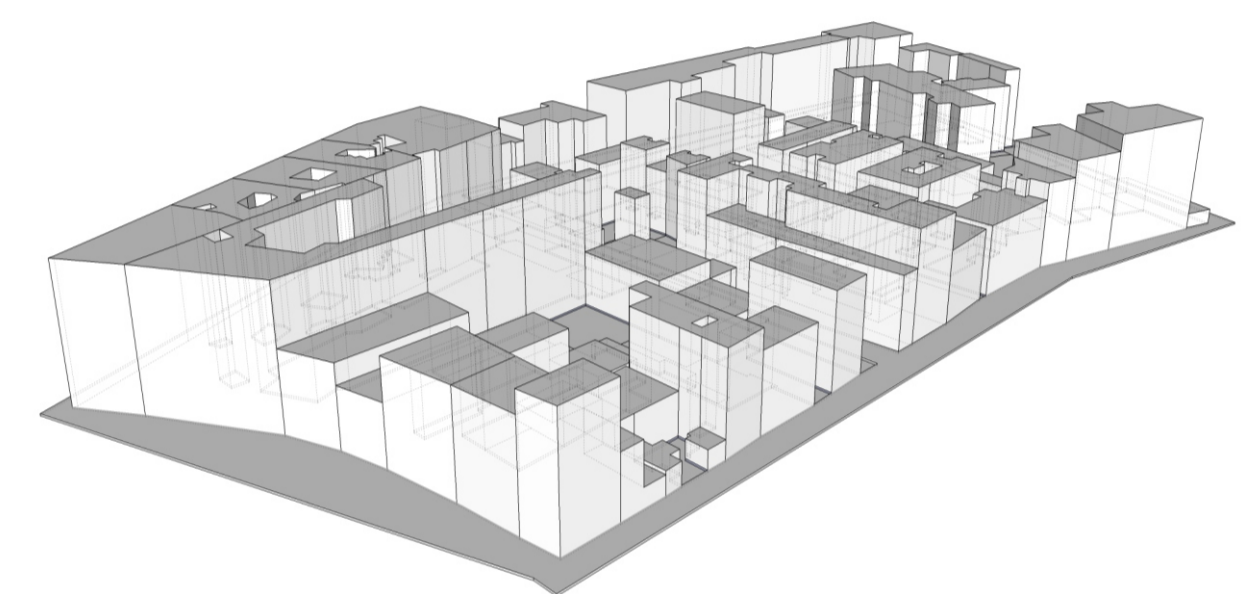




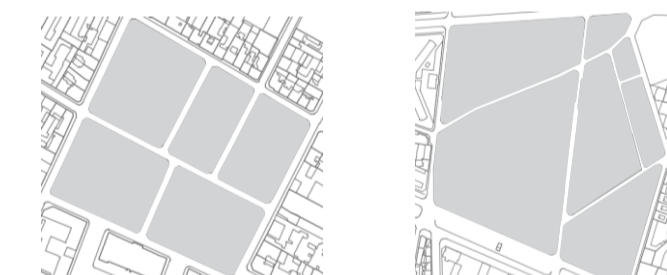
Edificabilidad	2409,46m2 / 52172,77m2
Ocupacion	42%
N De alturas	12 Plantas en promedio
Retranqueo vial	7,2m
N De Edificaciones	63 Edificaciones
Area construida	10175,2 mts



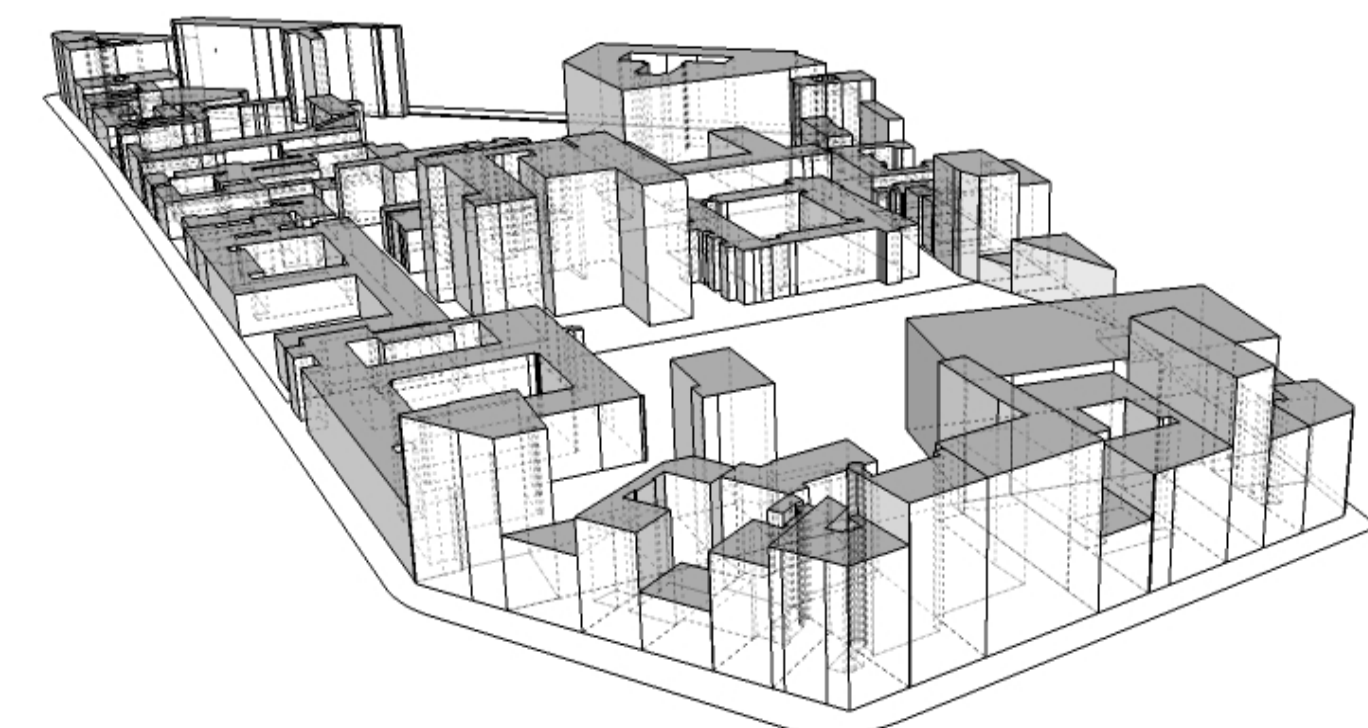
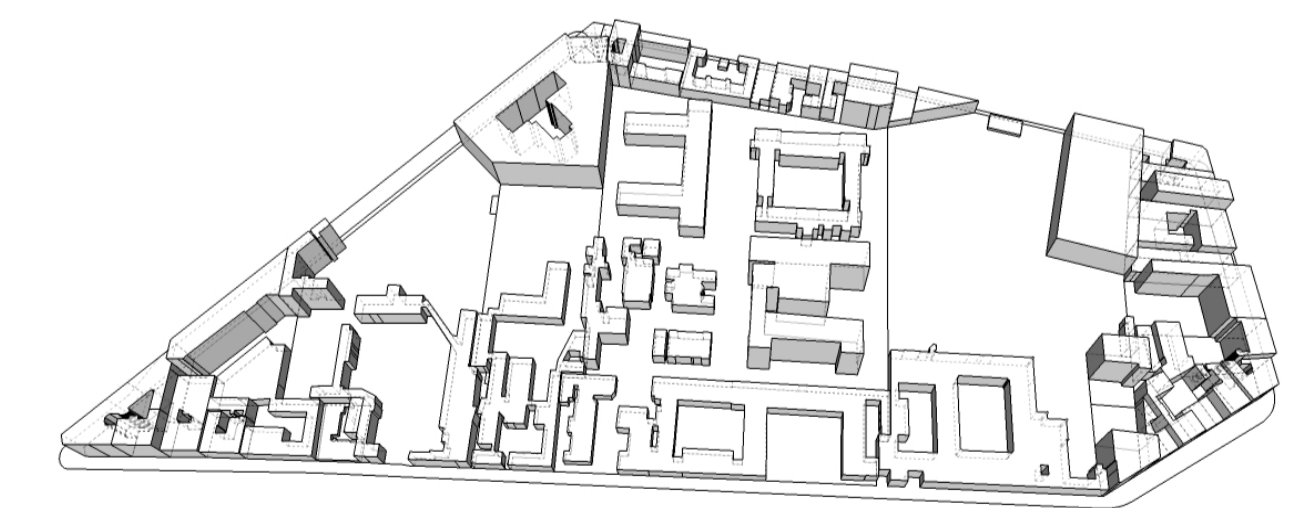
Tramas irregulares



Edificabilidad	36367m2 / 229057m2
Densidad	395,52 Viviendas/Ha
Ocupacion	33%
N De alturas	20
Retranqueo vial	6,8m
N De viviendas	3243 Viviendas



Trama reticulada Trama irregular



Esc 1:10000
N
↑