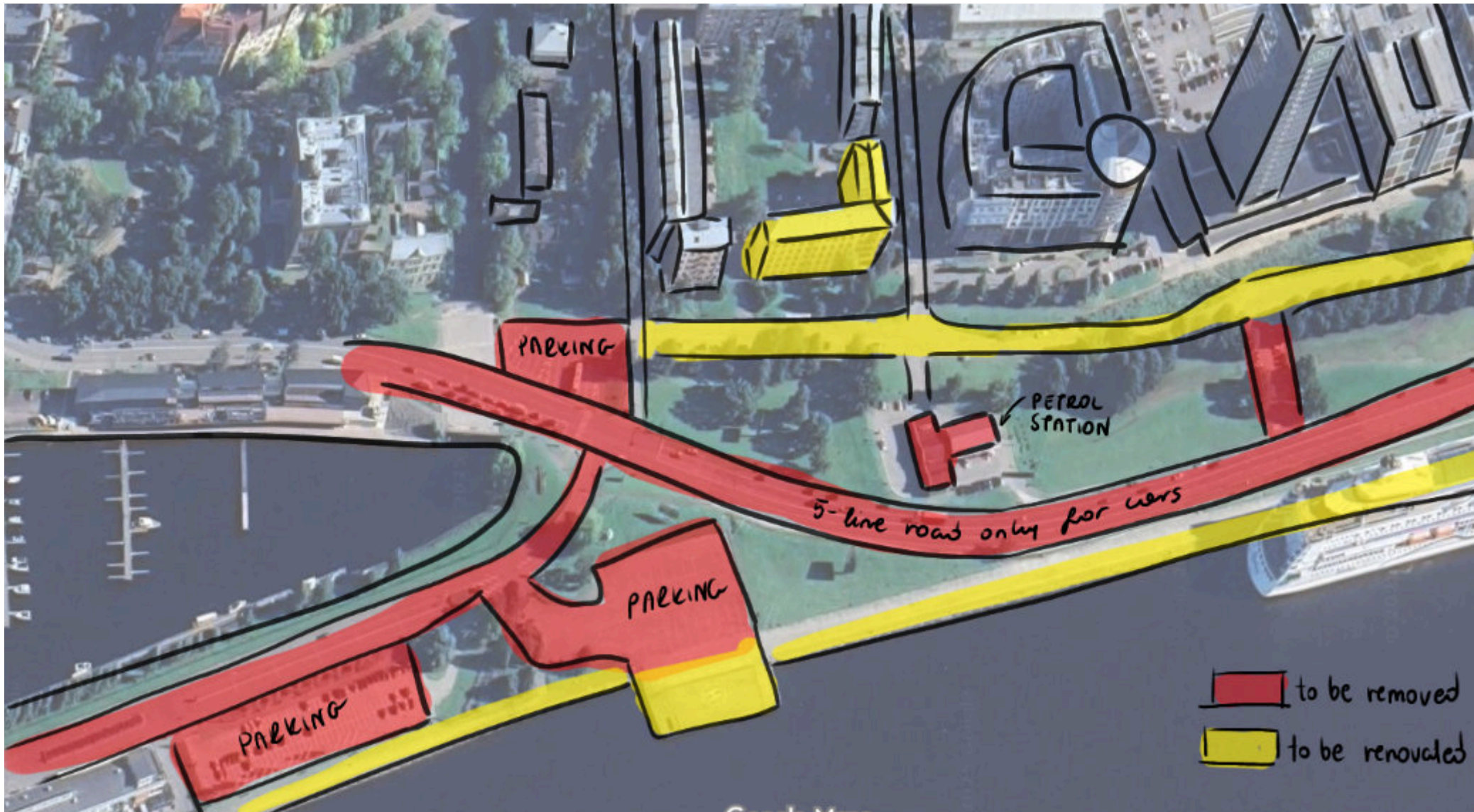
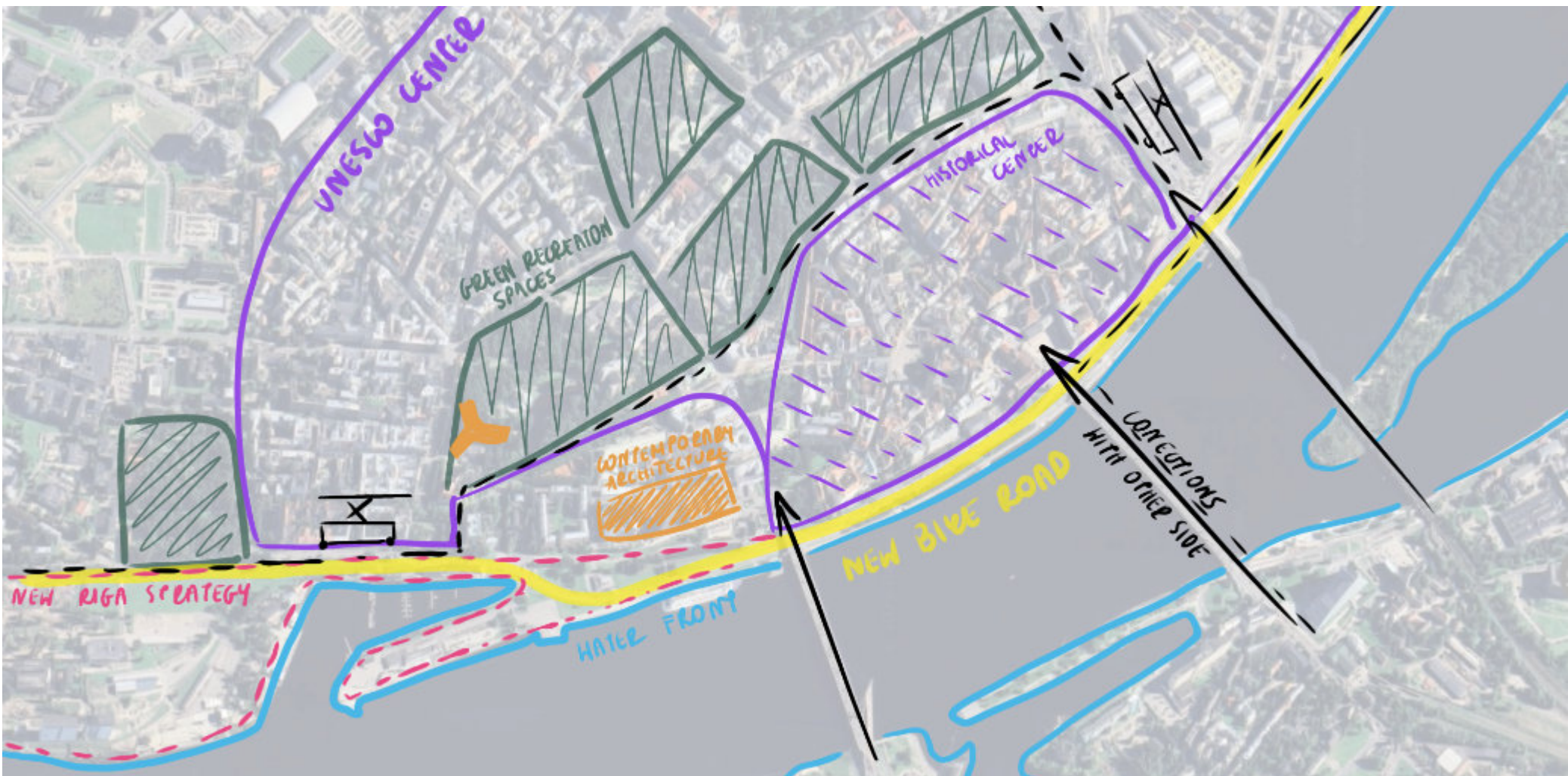


# Site analysis

# Riga - Latvia



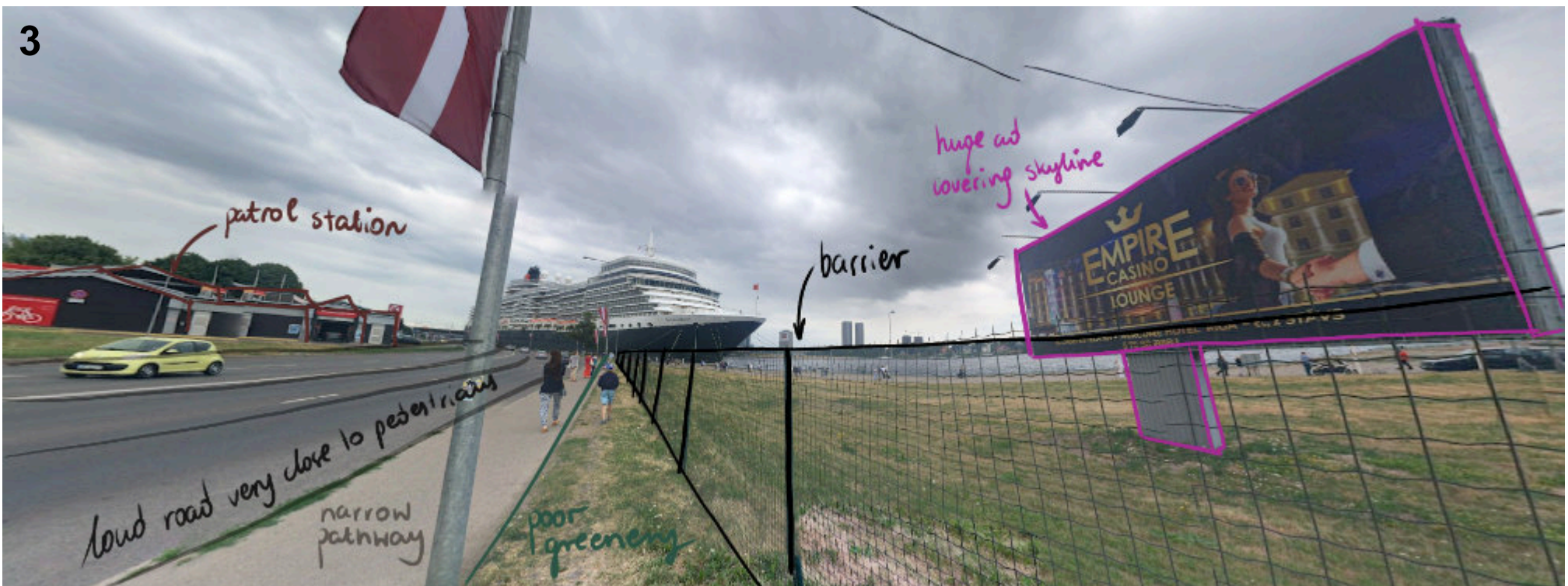
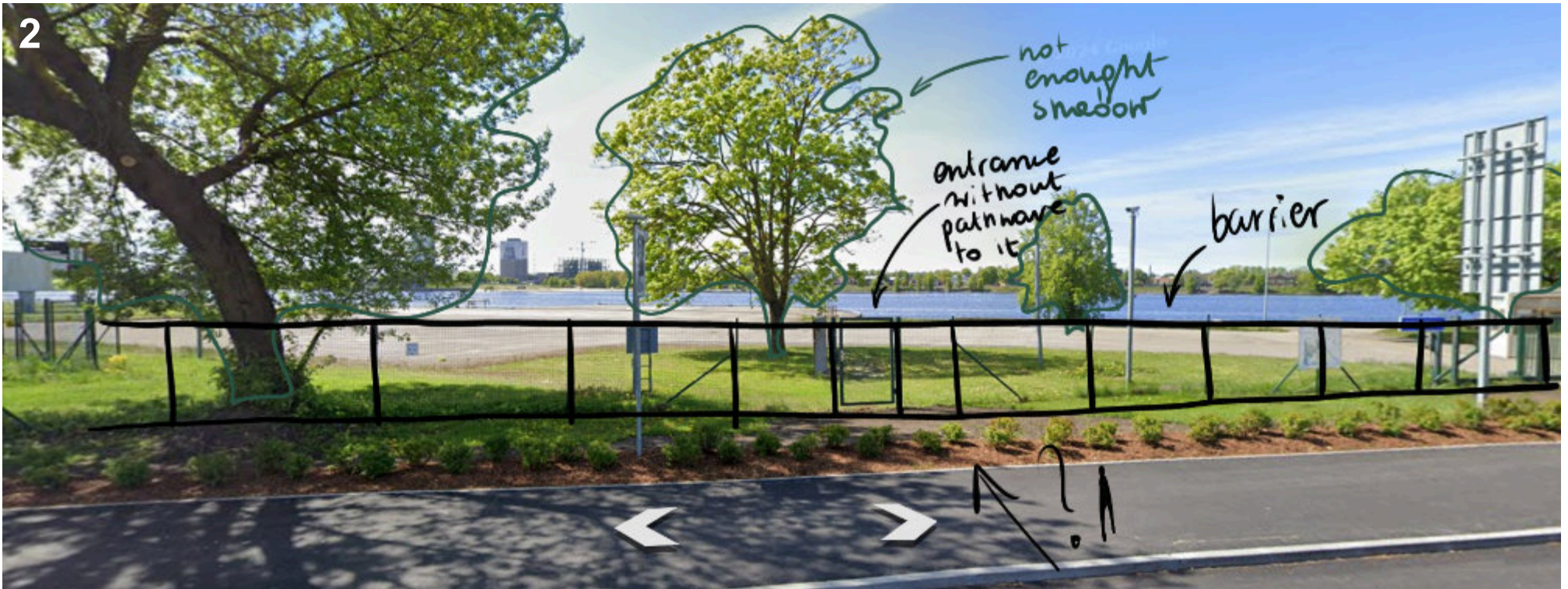
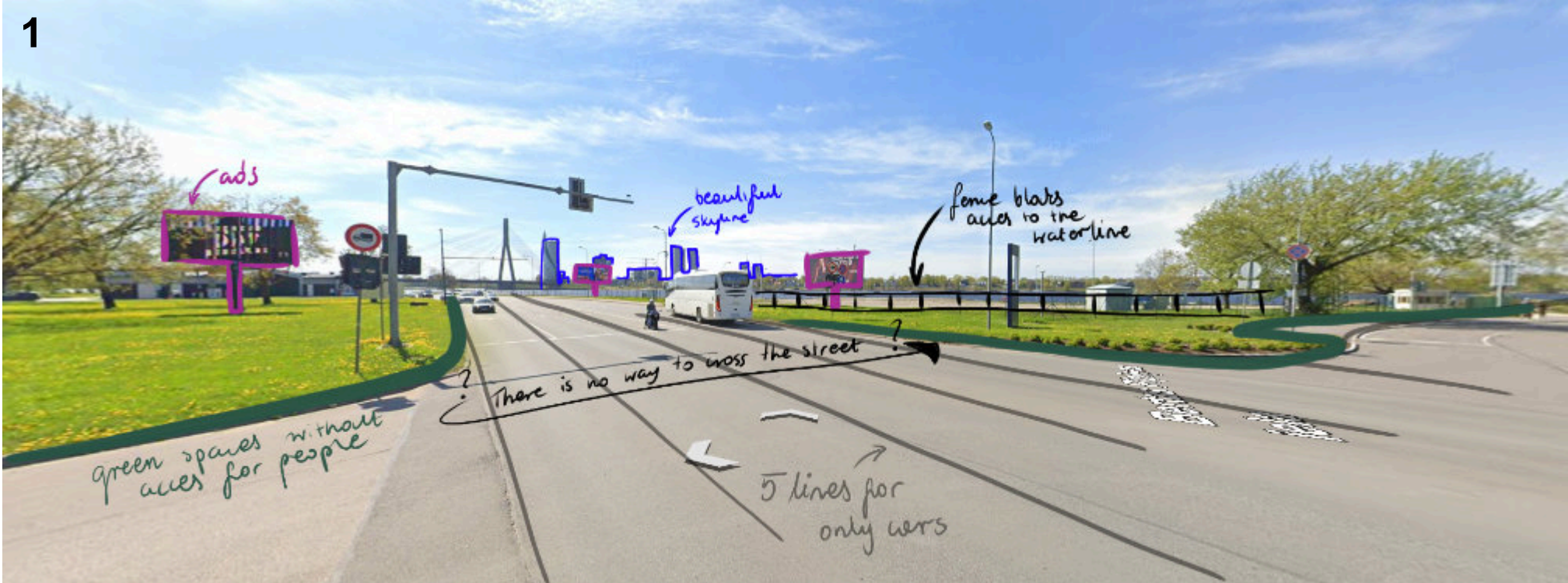
The plot holds significant assets: its attractive location near the city center, excellent transportation links, and substantial amounts of undeveloped space within an area of new construction and proximity to the waterfront.

However, the diagnosis reveals a clear wasted potential. The prime waterfront space remains inaccessible to the public, the area is heavily dominated by vehicular traffic, and there is a notable lack of recreational greenery. While the location itself is attractive due to its central proximity and topographic advantage of being near water, the current use is inadequate. This aligns with the city's existing plans to densify the zone and transition away from its outdated industrial character.



Site analysis

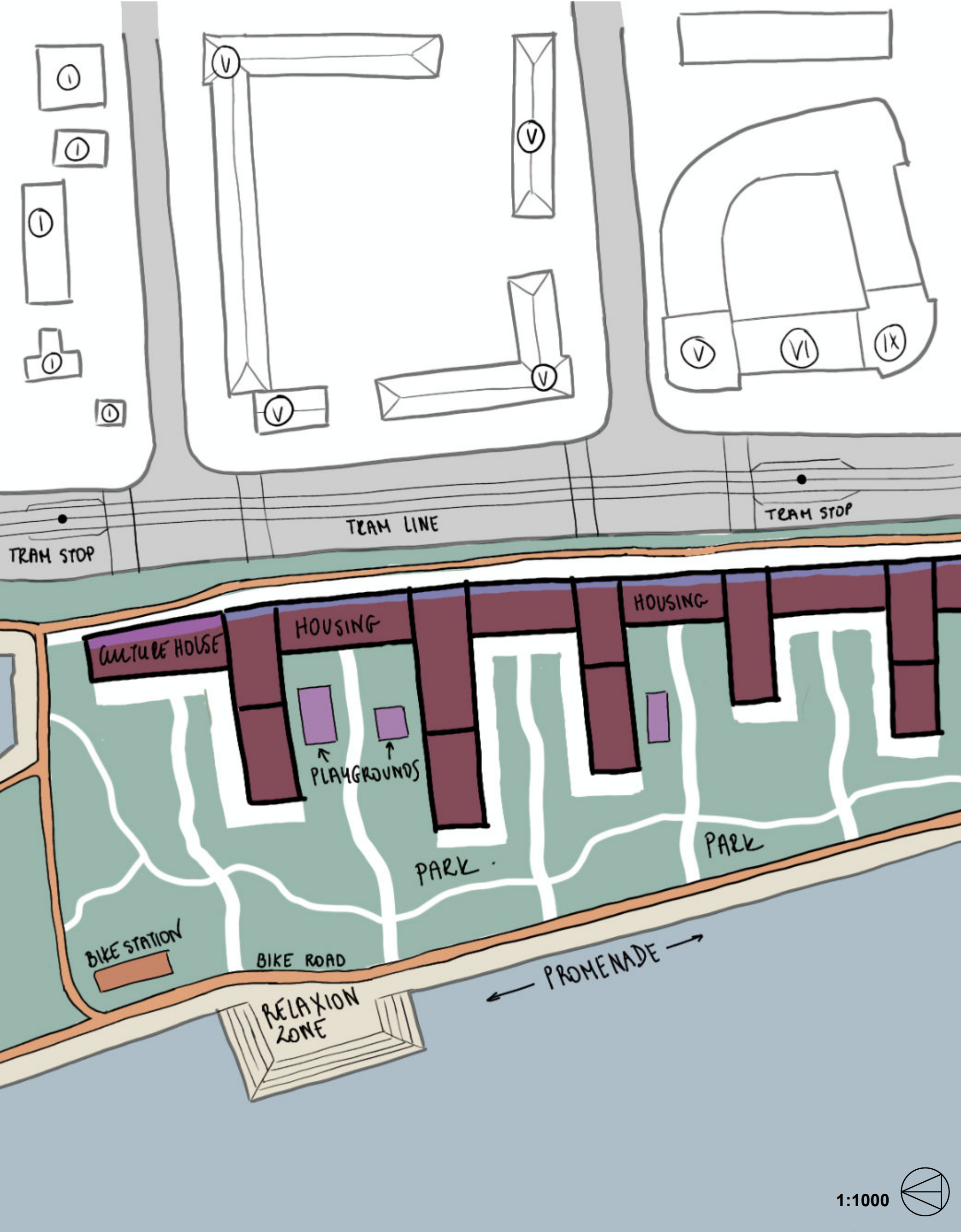
Riga - Latvia





Proyect - plan

Riga - Latvia





# Project



# River Forum



# Riga - Latvia



## PROPOSED SOLUTION:

The solution involves relocating through traffic to a parallel road and fundamentally restructuring the street network by shifting the main artery away from the waterfront. This creates space for new recreational green areas and services. The area will be densified with perimeter-block residential buildings along the new main street. A key priority is the prioritization of public transport through the introduction of a new tram line. Simultaneously, cycling will be prioritized along the waterfront with a dedicated, fast, and attractive bicycle route connecting the riverbanks. Pedestrian movement along the water will also be enhanced, creating an attractive, continuous promenade with improved walking access to the city center. The final outcome will be the creation of new, vibrant green spaces dedicated to public recreation.

The building layout, inspired by Manel de Solà-Morales' Les Casernes de Sant Andreu project, takes the form of open perimeter blocks. These combine dense urban fabric with permeability and numerous connections to the riverside recreational zone.

