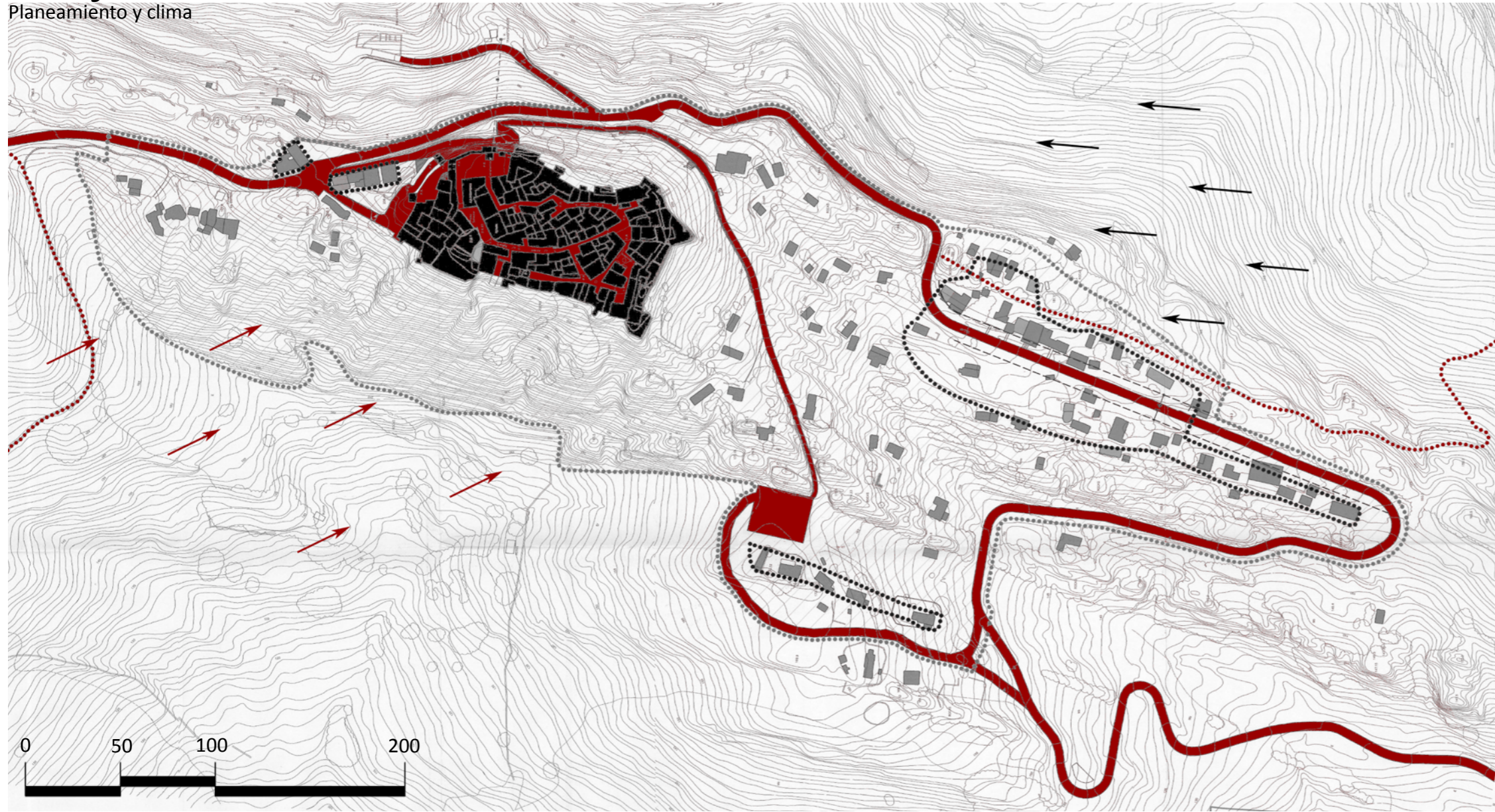


Conjunto històrico del reino de Granada - Castillo de Castellar

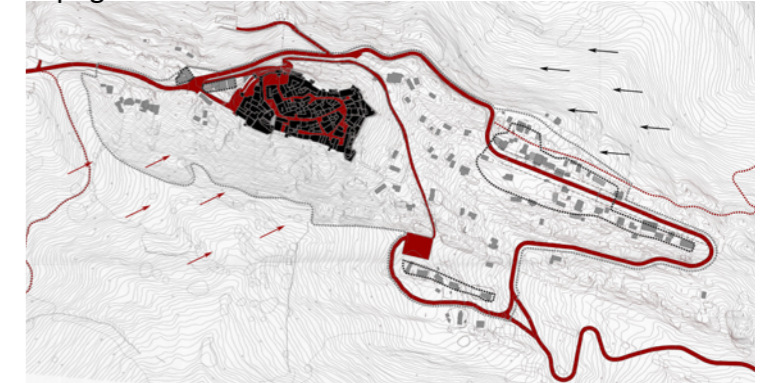
Planeamiento y clima



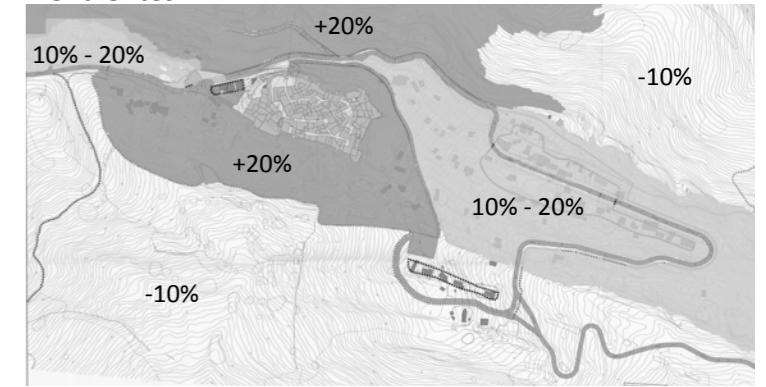
Elementos urbanos



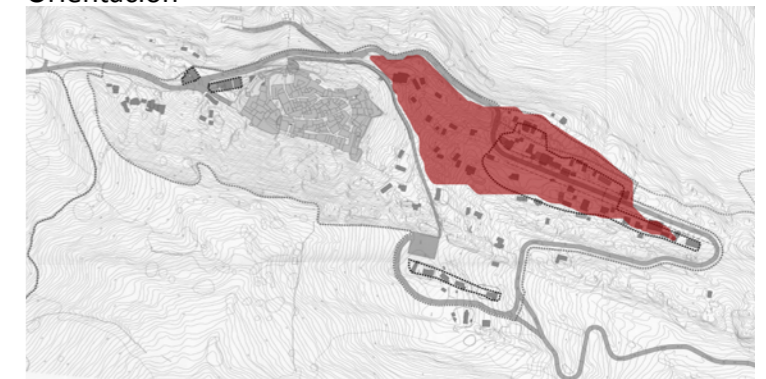
Topografía



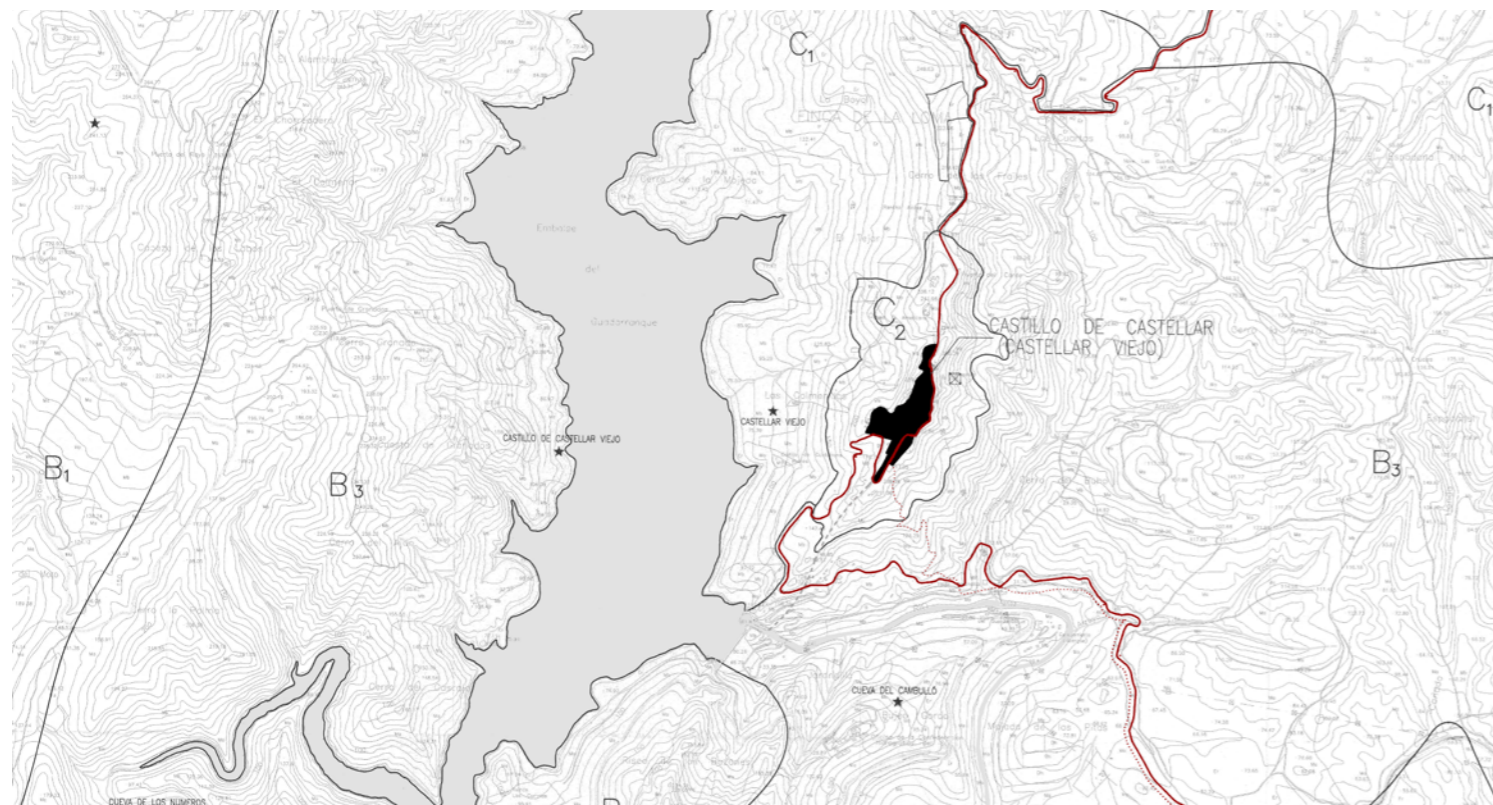
Pendientes



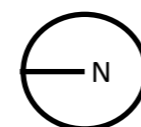
Orientación



Vientos



- Ambito de planiamento del plan espacial
- Calles principales
- Camino arabe
- Limite del suelo urbano extramuro
- Castillo
- Edificacion extramuro
- Viento càlidos
- Vientos frios



Alumnos:
Alberto Bin
Marco Ercoli