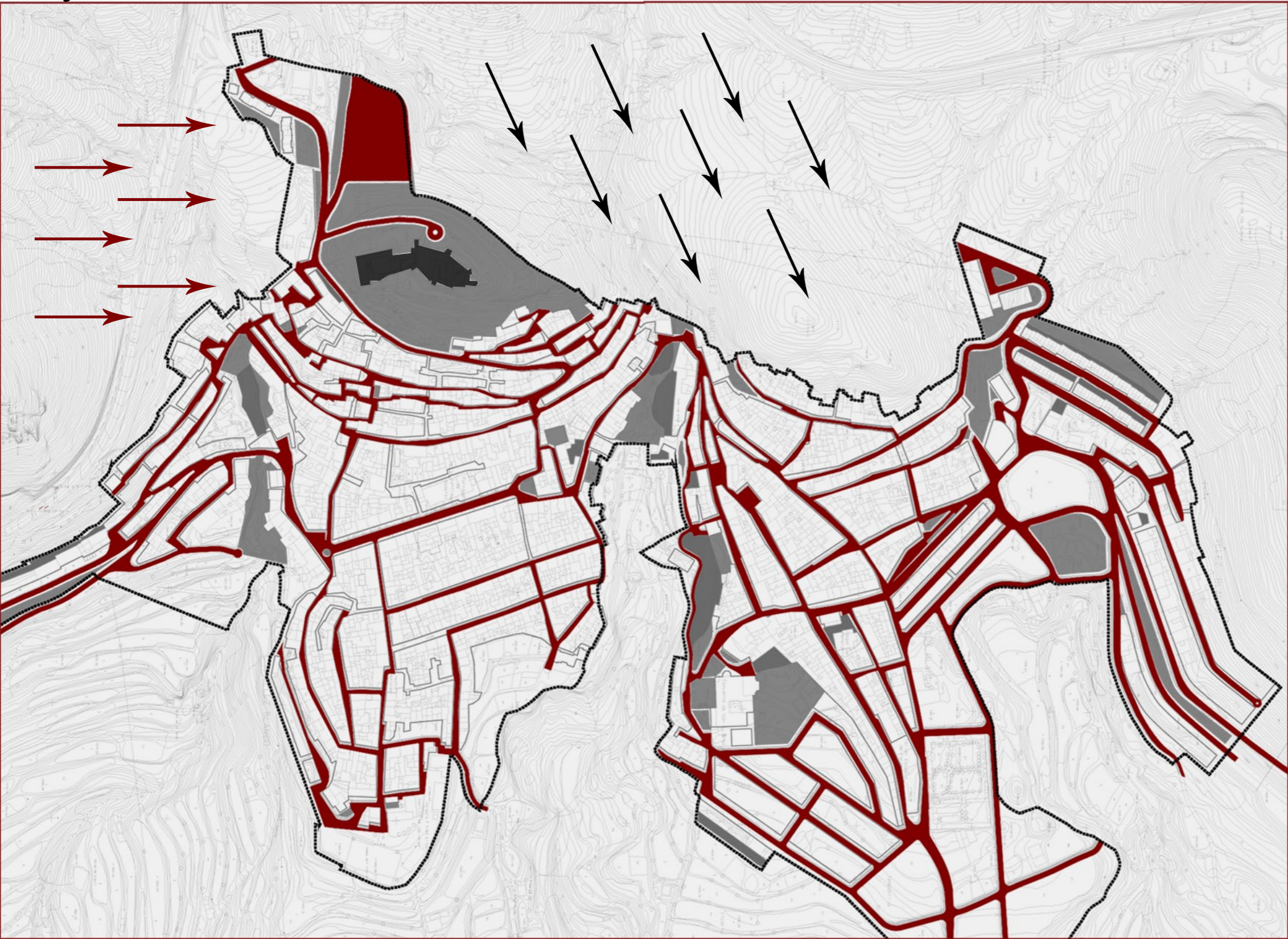
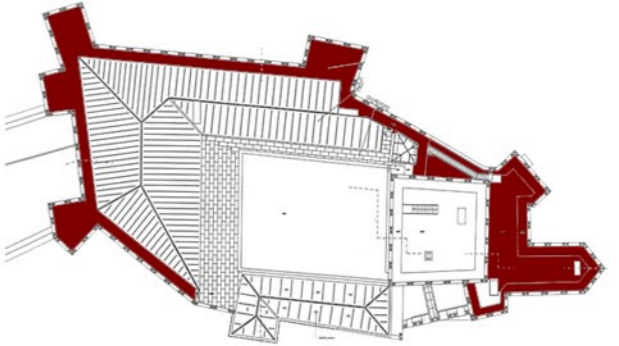


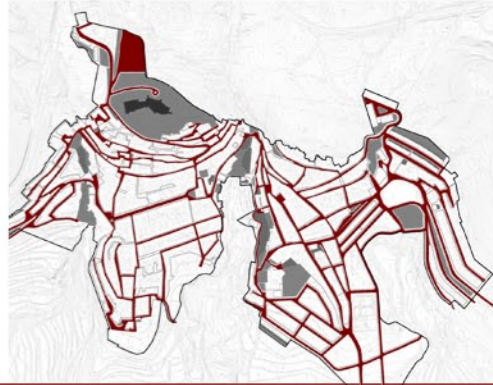
# Conjunto històrico del reino de Granada



Elementos Urbanos



Topografía



Pendientes

- > 20%
- 10 - 20%
- < 10%



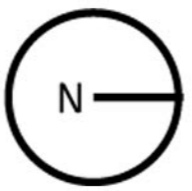
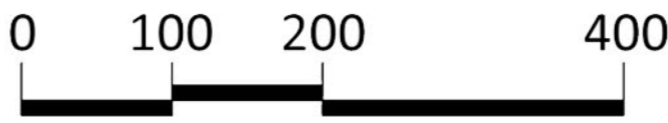
Orientación



Vientos



- Ambito de planiamento del plan espacial
- Calles principales
- Castillo
- Edificacion extramuro
- Viento càldos
- Vientos frios



Alumnos:  
Marco Ercoli\_Alberto Bin