

# TERRITORIAL PLAN AND ZONING

DEPHT



FUTURE  
PORT  
AREA



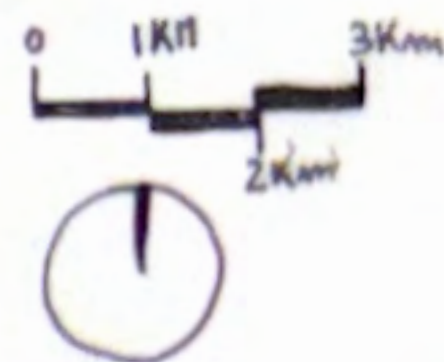
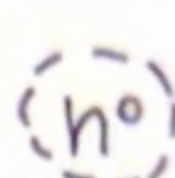
PORT  
AREA



FREE  
DEVELOPMENT  
AREA



(no) EXISTING  
PORT



GULF OF RIGA

Container shipping port

Riga FREEPORT  
Authority

Container  
Shipping Port

Container shipping port

Container terminal

Container Terminal

Container shipping port

Container shipping port

RIGA FREEPORT  
passenger Terminal

DEPHT - 16m

- 15m

DAUGAVA RIVER

- 14.5m

- 13m

- 12m

- 10.5m

(1)

(5)

(2)

(4)

(5)

(6)

(8)

(7)

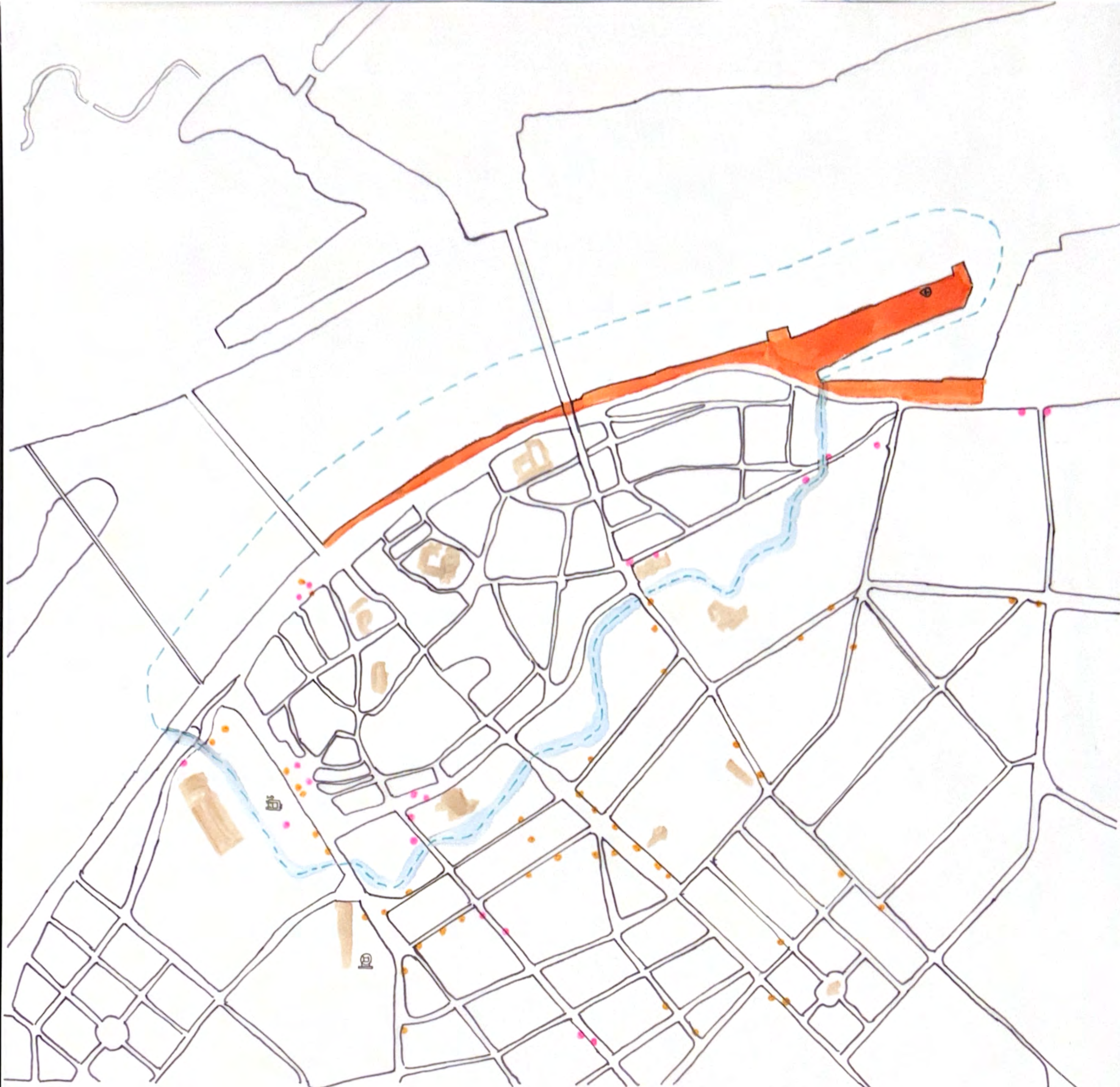
(9)



# ALBA-URBAN SCALE ANALYSIS

- PUBLIC INTEREST STOP
- BUS STOP
- PROJECT AREA
- CENTRAL TRAIN STATION
- CENTRAL BUS STATION
- TOURISTIC REPORT

0 1m 15m 1:5000



## Built-up system

- RESIDENTIAL DENSE
- CENTRAL AREA MIXED
- SUBURBAN SPREAD



## Open spaces system

- RESIDENTIAL USE
- RESIDENTIAL GREEN SPACE
- URBAN GREEN



## Main axes

- MAIN AXES
- SECONDARY AXES
- BRIDGE
- TRAIN BRIDGE





# ACTUAL SITUATION ALONG DAUGAVA RIVER

0 15m 30m 1:2000

- UNIVERSITY
- COMMERCIAL
- RELIGIOUS
- RESIDENTIAL
- OFFICE
- TOURISTIC FREEZED
- CENTRAL BUS STATION
- PUBLIC PARK
- URBAN GREEN

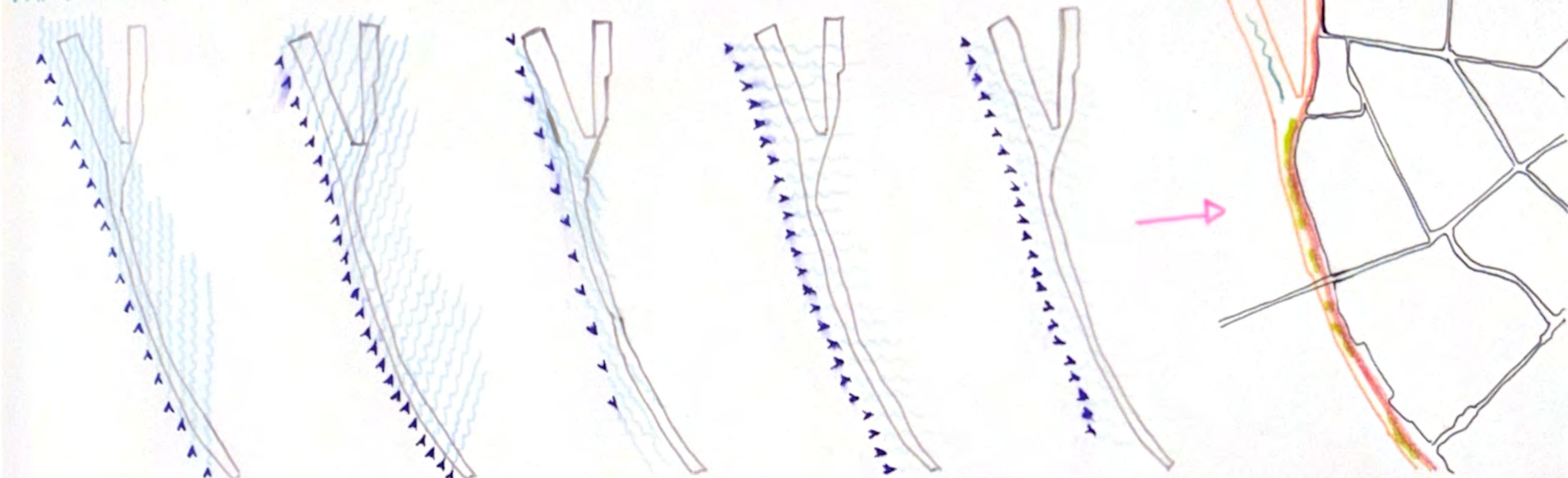




# FROM THE CITY TO THE RIVER



## Wind Analysis



▲ OCT/NOV/DIC/JAN/FEB  
S

▲ MAR/AUG/SEP  
S.S.O

▲ MAY  
N-NO

▲ JUNE  
O

➤ APRIL-JULY  
O-NO

### 1. RECONNECTION BETWEEN CITY AND RIVER

The project aims to overcome the physical barrier created by the fast-flowing road that currently separates Riga's historic center from the Daugava riverfront. The goal is to return a forgotten area to the citizens by creating a sequence of pedestrian crossing and completing the existing cycleway to ensure a continuous path from the port to the suburbs.

### 2. CREATION OF A NEW TERMINAL

To support the goal of expanding tourist traffic, the project provides a new terminal infrastructure in the port area.

### 3. Urban Park

A 1.8 km linear park is proposed to serve as an urban garden and representation of the Latvian national landscape.

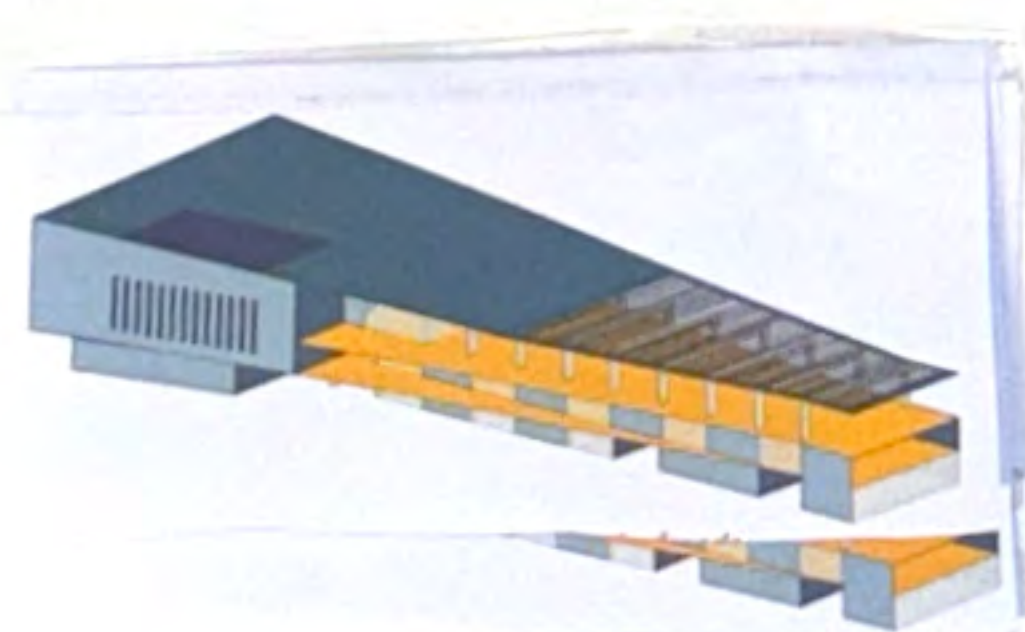
### 4. Concert Hall

Music and folk songs, is primary symbol of Latvian popular identity. Placing a concert hall in the port area serves to welcome tourists by immediately showcasing a core element of nation.

### 5. Water Memory Museum

This museum is dedicated to helping both tourists and young generations of Latvians rediscover the historical relationship between city and river.

## CONCERT HALL and Water Memory Museum



### MATERIALS AND WHAT THEY REPRESENT

1. ROUGH SLATE	2. SMOOTH SLATE	6. GRASS	7. OUTDOOR RESIN
3. GRAVEL	4. YELLOW GRANITE	8. SHOCKPROOF FLOOR	9. WIDE FLAT LANDS
5. WATER	PERILY AND SANDY REACHES	10. LATVIAN NATIONAL FLAG COLOR	
	BALTIC SEA RIVERS AND LAKES	11. WHITE GRANITE	
		12. SHADES DURING COLD SEASON	

CONCRETE	SHOCKPROOF FLOOR	HISTORICAL CENTER (PAVING Cobblestone)
----------	------------------	--

## NEW TERMINAL

